



MOTOROLA SOLUTIONS

MOTOTRBO™ System Release Notes
Professional Commercial Radios (PCR)

Version: M2025.01 v01
27 January 2025

EMEA Region

Contents

Scope	3
Abbreviations	4
What's New in System Release M2025.01	5
Product Versions	7
Product Availability	12
Documentation	14
Training Material	15
Important Notes	16
Open (Unresolved) Issues	23
Resolved Issues in M2025.xx System Releases	24
Open Source Software Legal Notice	26

Motorola Solutions confidential - do not redistribute - PartnerEmpower member, customer, and prospective customer use only.

Whilst care has been taken to ensure the accuracy of the information contained in this document, Motorola Solutions retains the right to make changes at any time without notice. Availability is subject to individual country law and regulations. All specifications shown are typical unless otherwise stated and are subject to change without notice. MOTOROLA, MOTO, MOTOROLA SOLUTIONS and the Stylized M Logo are trademarks or registered trademarks of Motorola Trademark Holdings, LLC and are used under license. All other trademarks are the property of their respective owners. ©2025 Motorola Solutions, Inc. All rights reserved.

Scope

These MOTOTRBO System Release Notes cover the following MOTOTRBO products:

- DP540, DP1400, MOTOTRBO R2, MOTOTRBO R5, MOTOTRBO R7a/R7, DP4000Ex Series, DP4000Ex Ma Series, SL1600 and SL2600 Portables
- DP2000e Series, DP3000e Series, DP4000e Series and SL4000e Series Portables
- MOTOTRBO Ion smart radio
- DM1000 Series and DM2600 Mobiles
- DM4000e Series Mobiles
- SLR 1000, SLR 5500 and SLR 8000 Repeaters
- CPS 2.0
- Radio Management
- RadioCentral Client
- Air Tracer
- Tuner
- RDAC
- Device Discovery and Mobility Service (DDMS)
- MOTOTRBO Network Interface Service (MNIS) Data Gateway
- MOTOTRBO Network Interface Service (MNIS) VRC Gateway
- MNIS Status Agent
- Capacity Max Bridge
- ESU Launchpad
- System Advisor
- System Design Tools
- Sensor Management Tool
- Second generation MOTOTRBO MPT1327 GOB
- MPT1327 GOB CPS
- Second generation MOTOTRBO Connect Plus GOB
- Connect Plus GOB CPS
- Connect Plus Infrastructure (XRC 9000 / 9100 Controller, XRT 9000 / 9100 Gateway, XRI 9100 Interconnect, Network Manager, Network Manager Connection Tool, XRT Configuration Tool)

Motorola Solutions confidential - do not redistribute - PartnerEmpower member, customer, and prospective customer use only.

Whilst care has been taken to ensure the accuracy of the information contained in this document, Motorola Solutions retains the right to make changes at any time without notice. Availability is subject to individual country law and regulations. All specifications shown are typical unless otherwise stated and are subject to change without notice. MOTOROLA, MOTO, MOTOROLA SOLUTIONS and the Stylized M Logo are trademarks or registered trademarks of Motorola Trademark Holdings, LLC and are used under license. All other trademarks are the property of their respective owners. ©2025 Motorola Solutions, Inc. All rights reserved.

Abbreviations

CPS	Customer Programming Software
CFS	Charge for Software
OTAP	Over The Air Programming
RM	Radio Management
OB	Option Board
RDAC	Repeater Diagnostics and Controls

Motorola Solutions confidential - do not redistribute - PartnerEmpower member, customer, and prospective customer use only.

Whilst care has been taken to ensure the accuracy of the information contained in this document, Motorola Solutions retains the right to make changes at any time without notice. Availability is subject to individual country law and regulations. All specifications shown are typical unless otherwise stated and are subject to change without notice. MOTOROLA, MOTO, MOTOROLA SOLUTIONS and the Stylized M Logo are trademarks or registered trademarks of Motorola Trademark Holdings, LLC and are used under license. All other trademarks are the property of their respective owners. ©2025 Motorola Solutions, Inc. All rights reserved.

What's New in System Release M2025.01

RM/CPS New Features

CPS 2.0 Codeplug Archive Protection

The User is able to protect codeplug archives with a password.

This new feature replaces the obsolete Codeplug Password feature that was depreciated in release M2021.01.

UI/UX Radio Management and Radio Central menu bar improvement

Users are able to navigate the RM and RC functionalities in a new and simplified way.

Radio New Features

Hide/unhide audio settings in radio menu via RM/CPS on MOTOTRBO R7 FKP and MOTOTRBO R5 LKP

Audio settings such as Noise Suppressor, Microphone Gain (Mic Gain), Automatic Gain Control (Mic AGC), Receive Audio Leveling (RAL, RX Audio Leveling) and Trill Enhancement can now be shown or hidden from the radio menu.

Automatic Registration Service (ARS) for MOTOTRBO R2

ARS provides information of the radio subscribers availability in the radio network.

Update to Action List on MOTOTRBO R7 FKP

Action List is a configurable method for quick access to the most frequently used features.

Infrastructure/System New Features

CMSS log collection enhancement

When troubleshooting a potential issue, Users can now collect all of their CMSS application logs in the same place rather than accessing them individually. The logs can be sent to Motorola Solutions technical support for analysis to find the root cause of the reported issue. For security and confidentiality reasons, such logs do not include any customer sensitive information.

Call monitoring with 20,000 active Users for Capacity Max

For Capacity Max systems with up to 750 sites, call monitoring functions have been expanded from 13,000 Users to 20,000 Users.

HPE Networking Solution for Capacity Max with up to 750 sites

HPE network equipment (with OS versions listed below in these release notes) has been tested for deployment on large systems with up to 750 sites. A system with 750 RF sites will need to be divided into IP network regions with a maximum of 250 RF sites each. The HPE MSR3016 is the dedicated hub site router for each region, with the ability to handle traffic in systems with up to 250 RF sites. The HPE MSR2003 and MSR2003x can be used as spoke site routers for the other sites. Customers can choose between Juniper and HPE equipment, but mixing equipment from different suppliers is not supported for a single region.

Motorola Solutions confidential - do not redistribute - PartnerEmpower member, customer, and prospective customer use only.

Whilst care has been taken to ensure the accuracy of the information contained in this document, Motorola Solutions retains the right to make changes at any time without notice. Availability is subject to individual country law and regulations. All specifications shown are typical unless otherwise stated and are subject to change without notice. MOTOROLA, MOTO, MOTOROLA SOLUTIONS and the Stylized M Logo are trademarks or registered trademarks of Motorola Trademark Holdings, LLC and are used under license. All other trademarks are the property of their respective owners. ©2025 Motorola Solutions, Inc. All rights reserved.

New Part Numbers

Part Number	Description	Delivered As	How to Order
GMVN6241P	CPS 2.0 / Radio Management (and Tools)	DVD	Partner Hub Shop
GMVN5520X	RDAC Application	DVD	Partner Hub Shop

Cybersecurity

Motorola Solutions, Inc. (MSI) has delivered a PCR MOTOTRBO 2025.01 release. MSI development and operations teams continually make security updates as needed based on evaluated threats, determine protective measures, create response capabilities, and promote compliance. MSI interacts with and participates in several US and international security organizations, such as U.S. Department of Homeland Security's National Cybersecurity & Communications Integration Center (NCCIC), National Institute of Standards and Technology (NIST), The 3rd Generation Partnership Project (3GPP), Telecommunications Industry Association (TIA), European Telecommunications Standards Institute (ETSI), Digital Mobile Radio (DMR) Security standardization, and others. Standards from the aforementioned organizations can map to security controls in international standards such as Information System Standards (ISO / IEC 27001).

The PCR MOTOTRBO 2025.01 system release includes enhancements to security based on the National Vulnerability Database and industry standards:

- Ongoing vulnerability management remediation based on network scanning security tools
- Ongoing Software Lifecycle Management improvements (3rd party software)

In addition to ongoing releases for security updates, MSI has a Bug Submission Program for external entities to disclose to MSI possible security vulnerabilities or issues. Motorola Solutions encourages researchers to use the PGP key when sending sensitive information via email. Please send all security vulnerability reports to security@motorolasolutions.com.

Motorola Solutions confidential - do not redistribute - PartnerEmpower member, customer, and prospective customer use only.

Whilst care has been taken to ensure the accuracy of the information contained in this document, Motorola Solutions retains the right to make changes at any time without notice. Availability is subject to individual country law and regulations. All specifications shown are typical unless otherwise stated and are subject to change without notice. MOTOROLA, MOTO, MOTOROLA SOLUTIONS and the Stylized M Logo are trademarks or registered trademarks of Motorola Trademark Holdings, LLC and are used under license. All other trademarks are the property of their respective owners. ©2025 Motorola Solutions, Inc. All rights reserved.

Product Versions

Listed below are the latest available MOTOTRBO Product Versions.

(Scroll down to the next table to see MOTOTRBO Product Versions associated with the different M2025.xx system releases)

MOTOTRBO Product	Latest version	MOTOTRBO Product	Latest version	MOTOTRBO Product	Latest version
DP540 Portables	R01.24.02.0001 (CP 24.42.03)	SLR 1000 Repeaters	R20.25.01.10* (CP 24.62.02)	Capacity Max Trunk Controller	cmxctc-pcr_20.25.01.00-50*
DP1400 Portables	R01.24.02.0001 (CP 24.42.03)	SLR 5500 Repeaters	R20.25.01.10* (CP 24.62.02)	Capacity Max System Advisor	UEM-PCR_25.01.00.63-00*
MOTOTRBO R2 Portables	R02.25.01.1002 (CP 25.21.06)	SLR 8000 Repeaters	R20.25.01.10* (CP 24.62.02)	System Design Tools	06.09
SL1600 Portables	R01.24.02.0001 (CP 24.42.03)	CPS 2.0	2.153.167.0	Sensor Management Tool	R01.00.01
DP2000e Series Portables	R02.25.01.1002 (CP 25.21.06)	Radio Management	2.153.167.0	R2.X MPT1327 GOB	R01.02.06
MOTOTRBO R5 Portables	R02.25.01.1002 (CP 25.21.06)	RadioCentral Client	2.153.167.0	MPT1327 GOB CPS	R02.00.05
SL2600 Portables	R02.25.01.1002 (CP 25.21.06)	Air Tracer	11.0 (Build 39)	R2.X Connect Plus GOB	R02.07.38 (CP 1.1.19)
DP3000e Series Portables	R02.25.01.1002 (CP 25.21.06)	Tuner	25.1 (Build 8)	R2.X Connect Plus GOB CPS	R02.07.43
DP4000e Series Portables	R02.25.01.1002 (CP 25.21.06)	RDAC	25.1 (Build 5)	XRC 9000 / 9100 Controller	R02.100.05.1036_1695
MOTOTRBO R7/R7a Portables	R02.25.01.1002 (CP 25.21.06)	Device Discovery and Mobility Service (DDMS)	R25.01.0003*	XRT 9000 / 9100 Gateway	R02.100.05.1036_1695
DP4000Ex/DP4000 Ex MA Series Portables	R02.25.01.1002 (CP 25.21.06)	MOTOTRBO Network Interface Service (MNIS) Data Gateway	R25.01.0018*	XRI 9100 Interconnect	R02.100.05.1030
SL4000e Series Portables	R02.25.01.1002 (CP 25.21.06)	MOTOTRBO Network Interface Service (MNIS) Status Agent	R22.3.1	Network Manager (merged with XRC / XRI packages)	R02.100.05.1030
MOTOTRBO Ion smart radio	R03.20.00 / R02.24.01.4000 (CP 24.21.04)	Capacity Max ESU Launchpad	DESU_LP-R17.18.10.56-02.rhel.iso	Network Manager Connection Tool	R02.100.05.1030
DM1000 Series Mobiles	R01.24.02.0001 (CP 24.42.03)	Capacity Max System Server Installer Software Image	CMSS-M2025.01.00-release-25.01.03.1735920173-b280dab.iso*	XRT Configuration Tool	R02.100.05.1030
DM2600 Mobiles	R02.25.01.1002 (CP 25.21.06)	MNIS Voice and Radio Command (VRC) Gateway	PCR-MNIS_25.01.00.00-14*		
DM4000e Series Mobiles	R02.25.01.1002 (CP 25.21.06)	Capacity Max ESU	ESU-PCR_25.01.28.00-66*		

* This version will become available after 6 February 2025.

Motorola Solutions confidential - do not redistribute - PartnerEmpower member, customer, and prospective customer use only.

Whilst care has been taken to ensure the accuracy of the information contained in this document, Motorola Solutions retains the right to make changes at any time without notice. Availability is subject to individual country law and regulations. All specifications shown are typical unless otherwise stated and are subject to change without notice. MOTOROLA, MOTO, MOTOROLA SOLUTIONS and the Stylized M Logo are trademarks or registered trademarks of Motorola Trademark Holdings, LLC and are used under license. All other trademarks are the property of their respective owners. ©2025 Motorola Solutions, Inc. All rights reserved.

Listed below are all MOTOTRBO Product Versions associated with the different M2025.xx system releases. For products marked “–” in this table there were no new versions introduced with a system release.

MOTOTRBO Product	M2025.01
DP540 Portables	–
DP1400 Portables	–
MOTOTRBO R2 Portables	R02.25.01.1002 (CP 25.21.06)
SL1600 Portables	–
DP2000e Series Portables	R02.25.01.1002 (CP 25.21.06)
MOTOTRBO R5 Portables	R02.25.01.1002 (CP 25.21.06)
SL2600 Portables	R02.25.01.1002 (CP 25.21.06)
DP3000e Series Portables	R02.25.01.1002 (CP 25.21.06)
DP4000e Series Portables	R02.25.01.1002 (CP 25.21.06)
MOTOTRBO R7/R7a Portables	R02.25.01.1002 (CP 25.21.06)
DP4000Ex/DP4000 Ex MA Series Portables	R02.25.01.1002 (CP 25.21.06)
SL4000e Series Portables	R02.25.01.1002 (CP 25.21.06)
MOTOTRBO Ion smart radio	–
DM1000 Series Mobiles	–
DM2600 Mobiles	R02.25.01.1002 (CP 25.21.06)
DM4000e Series Mobiles	R02.25.01.1002 (CP 25.21.06)
SLR 1000 Repeaters	R20.25.01.10* (CP 24.62.02)
SLR 5500 Repeaters	R20.25.01.10* (CP 24.62.02)
SLR 8000 Repeaters	R20.25.01.10* (CP 24.62.02)
CPS 2.0	2.153.167.0
Radio Management	2.153.167.0
RadioCentral Client	2.153.167.0
Air Tracer	–
Tuner	25.1 (Build 8)
RDAC	25.1 (Build 5)
Device Discovery and Mobility Service (DDMS)	R25.01.0003*

Motorola Solutions confidential - do not redistribute - PartnerEmpower member, customer, and prospective customer use only.

Whilst care has been taken to ensure the accuracy of the information contained in this document, Motorola Solutions retains the right to make changes at any time without notice. Availability is subject to individual country law and regulations. All specifications shown are typical unless otherwise stated and are subject to change without notice. MOTOROLA, MOTO, MOTOROLA SOLUTIONS and the Stylized M Logo are trademarks or registered trademarks of Motorola Trademark Holdings, LLC and are used under license. All other trademarks are the property of their respective owners. ©2025 Motorola Solutions, Inc. All rights reserved.

MOTOTRBO Network Interface Service (MNIS) Data Gateway	R25.01.0018*
MOTOTRBO Network Interface Service (MNIS) Status Agent	—
Capacity Max ESU Launchpad	—
Capacity Max System Server Installer Software Image	CMSS-M2025.01.00-release-25.01.03.1735920173-b280dab.iso*
MNIS Voice and Radio Command (VRC) Gateway	PCR-MNIS_25.01.00.00-14*
Capacity Max ESU	ESU-PCR_25.01.28.00-66*
Capacity Max Trunk Controller	cmxtc-pcr_20.25.01.00-50*
Capacity Max System Advisor	UEM-PCR_25.01.00.63-00*
System Design Tools	—
Sensor Management Tool	—
R2.X MPT1327 GOB	—
MPT1327 GOB CPS	—
R2.X Connect Plus GOB	—
R2.X Connect Plus GOB CPS	—
XRC 9000 / 9100 Controller	—
XRT 9000 / 9100 Gateway	—
XRI 9100 Interconnect	—
Network Manager (merged with XRC / XRI packages)	—
Network Manager Connection Tool	—
XRT Configuration Tool	—

* This version will become available after 6 February 2025.

3 rd Party Application	M2025.01
SmartPTT PLUS	9.14.100.512*
TRBOnet PLUS	6.2.3.7500*
ConSEL PLUS	v7r102*

* This version will become available after 6 February 2025.

Motorola Solutions confidential - do not redistribute - PartnerEmpower member, customer, and prospective customer use only.

Whilst care has been taken to ensure the accuracy of the information contained in this document, Motorola Solutions retains the right to make changes at any time without notice. Availability is subject to individual country law and regulations. All specifications shown are typical unless otherwise stated and are subject to change without notice. MOTOROLA, MOTO, MOTOROLA SOLUTIONS and the Stylized M Logo are trademarks or registered trademarks of Motorola Trademark Holdings, LLC and are used under license. All other trademarks are the property of their respective owners. ©2025 Motorola Solutions, Inc. All rights reserved.

3 rd Party Network Equipment	M2025.01
Juniper JUNOS for EX2300 switches	21.4R3-S3.4
Juniper JUNOS for SRX3xx routers	21.4R3-S3.4
Juniper JUNOS for SRX1500 routers	21.4R3-S4.9
HPE ArubaOS for Aruba-6000 switches	CX.6000.10.13.10 00
HPE OS for MSR2003X routers	MSR2000X_9.10.E 9141L11
HPE OS for MSR30x6 routers	MSR30X6_7.10.R6 728P27

Notes:

1. From M2020.01 onwards only products (i.e. MOTOTRBO radios, repeaters and CMSS) which are either in warranty or covered by a service package will accept software updates. Software Update Management (SUM) was introduced with the R2.10 system release and provides products with built-in intelligence to determine if they are eligible to accept a software update. Products on prior releases must therefore be upgraded to an R2.10 system release and be eligible to accept a software update before they can be upgraded to M2020.01 onwards.
2. The Capacity Max System Advisor (SA) client is not accessible for the System View, Grid View and Alarm Details view if Java version 8u211 or newer is used on the PC where the SA client resides. Downgrading Java to any version between and including 8u181 and 8u201 will work fine.
3. Starting from M2024.01 fault management of CX6000-24G, ARUBA-2530-24, MSR2003, MSR2003X and MSR3016 was added to the System Advisor. To use it, SNMP shall be enabled in those network equipment configurations. For details please refer to Chapter 8 "Configuration Description for HPE infrastructure" in MOTOTRBO™ CAPACITY MAX Installation and Configuration manual. After enabling SNMP on network equipment, devices should be rediscovered in System Advisor using the context menu on System View or Network Database view. For details please refer to the System Advisor manual. Equipment without SNMP enabled will show up as Gray in System Advisor
4. With R2.8.0 and newer repeater releases, it is recommended to use USB 2.0 or USB 3.0 ports on the PC or connect repeater via USB 2.0 hub when upgrading the repeater via USB.
5. For CMSS (Capacity Max System Server):
 - a. Access to the MSI MyView portal to download MOTOTRBO M2025.01 Capacity Max System Server SW Upgrade as software iso image
6. For the PC used for CMSS upgrade only from M2022.03 to M2025.01 (note: upgrading from M2023.01, M2024.01, M2024.01.01, and M2024.02 to M2025.01 does not require ESU-LP):
 - a. If ESU-LP is required, order (1) T8486A, MOTOTRBO Capacity Max System Server SW Update Launch Pad which contains the ESU LP software files on a DVD.
 - b. Alternatively, for customers with access to the MSI MyView portal, you can order (1) T8483B, MOTOTRBO Capacity Max System Server SW Update Launch Pad where you will receive an e-mail with a unique link to access/download the ESU LP application files from the MyView portal. The T8483B will require an e-mail address at time of order.

Motorola Solutions confidential - do not redistribute - PartnerEmpower member, customer, and prospective customer use only.

Whilst care has been taken to ensure the accuracy of the information contained in this document, Motorola Solutions retains the right to make changes at any time without notice. Availability is subject to individual country law and regulations. All specifications shown are typical unless otherwise stated and are subject to change without notice. MOTOROLA, MOTO, MOTOROLA SOLUTIONS and the Stylized M Logo are trademarks or registered trademarks of Motorola Trademark Holdings, LLC and are used under license. All other trademarks are the property of their respective owners. ©2025 Motorola Solutions, Inc. All rights reserved.

- c. Please refer to the section “Capacity Max System Upgrade from M2022.03, M2023.01, M2024.01, M2024.01.01 or M2024.02 to M2025.01” of Capacity Max System Release Upgrade Guide for additional details. It is available on the Learning Experience Portal (LXP).
- d. NOTICE: The DVD (T8486A) can take 2-3 weeks for delivery while the downloadable file via the MyView portal (T8483B) is generally available within a week. Please plan ahead and take the delivery times into consideration before scheduling your upgrade

The feature sets supported in the release are compliant with the versions of ETSI DMR standard specifications listed below. Note that DMR Tier 3 protocol versions are not necessarily backwards compatible; it is recommended to ensure the supported protocol versions are compatible if using another manufacturer’s infrastructure or subscribers.

ETSI DMR Specification	M2025.01
TS 102 361-1: the DMR air interface protocol	v2.6.1
TS 102 361-2: the DMR voice and generic services and facilities	v2.5.1
TS 102 361-3: the DMR data protocol	v1.3.1
TS 102 361-4: the DMR trunking protocol	v1.7.1 ~ 1.12.1

Motorola Solutions confidential - do not redistribute - PartnerEmpower member, customer, and prospective customer use only.

Whilst care has been taken to ensure the accuracy of the information contained in this document, Motorola Solutions retains the right to make changes at any time without notice. Availability is subject to individual country law and regulations. All specifications shown are typical unless otherwise stated and are subject to change without notice. MOTOROLA, MOTO, MOTOROLA SOLUTIONS and the Stylized M Logo are trademarks or registered trademarks of Motorola Trademark Holdings, LLC and are used under license. All other trademarks are the property of their respective owners. ©2025 Motorola Solutions, Inc. All rights reserved.

Product Availability

The following table indicates which MOTOTRBO products covered by this document are set up as orderable parts (to order via Partner Hub Shop / Order Management) and which are available to download from MyView Portal.

MOTOTRBO Product	Orderable Part Number	MyView Portal* (up to M2021.04) Product Name / Product Line	MyView Portal* (currently or from M2022.01) Product Name / Product Line
Upgrade Package for DP540, DP1400 and SL1600 Portables	N/A	MOTOTRBO EMEA Commercial Devices Release <Release> / MOTOTRBO EMEA Commercial Devices	MOTOTRBO EMEA Devices Release <Release> / MOTOTRBO EMEA Devices
Upgrade Package for MOTOTRBO R2, DP2000e Series, MOTOTRBO R5, SL2600, DP3000e Series, DP4000e Series, DP4000Ex Series and DP4000Ex Ma Series Portables	N/A	MOTOTRBO EMEA Professional Devices Release <Release> / MOTOTRBO EMEA Professional Devices	MOTOTRBO EMEA Devices Release <Release> / MOTOTRBO EMEA Devices
Upgrade Package for MOTOTRBO R7/R7a	N/A	MOTOTRBO EMEA Professional Devices Release <Release> / MOTOTRBO EMEA Professional Devices	MOTOTRBO EMEA Devices Release <Release> / MOTOTRBO EMEA Devices
Upgrade Package for SL4000e Series Portables	N/A	MOTOTRBO EMEA Professional Devices Release <Release> / MOTOTRBO EMEA Professional Devices	MOTOTRBO EMEA Devices Release <Release> / MOTOTRBO EMEA Devices
MOTOTRBO Ion smart radio	N/A	N/A	MOTOTRBO EMEA Devices Release <Release> / MOTOTRBO EMEA Devices
Upgrade Package for DM1000 Series Mobiles	N/A	MOTOTRBO EMEA Commercial Devices Release <Release> / MOTOTRBO EMEA Commercial Devices	MOTOTRBO EMEA Devices Release <Release> / MOTOTRBO EMEA Devices
Upgrade Package for DM2600 Mobiles	N/A	MOTOTRBO EMEA Professional Devices Release <Release> / MOTOTRBO EMEA Professional Devices	MOTOTRBO EMEA Devices Release <Release> / MOTOTRBO EMEA Devices
Upgrade Package for DM4000e Series Mobiles	N/A	MOTOTRBO EMEA Professional Devices Release <Release> / MOTOTRBO EMEA Professional Devices	MOTOTRBO EMEA Devices Release <Release> / MOTOTRBO EMEA Devices
Upgrade Package for SLR 1000, SLR 5500 and SLR 8000 Repeaters	N/A	MOTOTRBO EMEA Repeaters Release <Release> / MOTOTRBO EMEA Repeaters	MOTOTRBO EMEA Repeaters Release <Release> / MOTOTRBO EMEA Repeaters
RDAC	GMVN5520_(DVD)	N/A	N/A
CPS 2.0	GMVN6241_(DVD)	MOTOTRBO EMEA Software Release <Release> / MOTOTRBO EMEA Software	MOTOTRBO CPS and RM Release <Release> / MOTOTRBO CPS and RM
Radio Management	GMVN6241_(DVD)	MOTOTRBO EMEA Software Release <Release> / MOTOTRBO EMEA Software	MOTOTRBO CPS and RM Release <Release> / MOTOTRBO Software
Air Tracer	GMVN6241_(DVD)	MOTOTRBO EMEA General Software Tools / MOTOTRBO EMEA Software	MOTOTRBO EMEA General Software Tools / MOTOTRBO EMEA Software
Tuner	GMVN6241_(DVD)	MOTOTRBO EMEA General Software Tools / MOTOTRBO EMEA Software	MOTOTRBO EMEA General Software Tools / MOTOTRBO EMEA Software

Motorola Solutions confidential - do not redistribute - PartnerEmpower member, customer, and prospective customer use only.

Whilst care has been taken to ensure the accuracy of the information contained in this document, Motorola Solutions retains the right to make changes at any time without notice. Availability is subject to individual country law and regulations. All specifications shown are typical unless otherwise stated and are subject to change without notice. MOTOROLA, MOTO, MOTOROLA SOLUTIONS and the Stylized M Logo are trademarks or registered trademarks of Motorola Trademark Holdings, LLC and are used under license. All other trademarks are the property of their respective owners. ©2025 Motorola Solutions, Inc. All rights reserved.

Device Discovery Mobility Service (DDMS)	GMVN6241_ (DVD)	MOTOTRBO EMEA General Software Tools / MOTOTRBO EMEA Software	MOTOTRBO EMEA General Software Tools / MOTOTRBO EMEA Software
MOTOTRBO Network Interface Service (MNIS) Data Gateway	GMVN6241_ (DVD)	MOTOTRBO EMEA General Software Tools / MOTOTRBO EMEA Software	MOTOTRBO EMEA General Software Tools / MOTOTRBO EMEA Software
MOTOTRBO Network Interface Service (MNIS) Status Agent	GMVN6241_ (DVD)	MOTOTRBO EMEA General Software Tools / MOTOTRBO EMEA Software	MOTOTRBO EMEA General Software Tools / MOTOTRBO EMEA Software
MOTOTRBO Capacity Max System Server SW Update Launch Pad	T8486A** (DVD)	N/A	N/A
MOTOTRBO Capacity Max System Server SW Update Launch Pad	T8483B** (MyView Portal)	ESU Launchpad 1.0 (<Release>)***/ MOTOTRBO Capacity Max	ESU Launchpad 1.0 (<Release>)***/ MOTOTRBO Capacity Max
MOTOTRBO Capacity Max System Server (CMSS) Windows Update	T8735A** (DVD)	N/A	N/A
MOTOTRBO Capacity Max System Server (CMSS) Windows Update	T8736B** (MyView Portal)	CMSS Windows Motopatch*** / MOTOTRBO Capacity Max	CMSS Windows Motopatch*** / MOTOTRBO Capacity Max
MOTOTRBO 2.10.X Capacity Max System Server SW Upgrade	T8482A** (USB & DVD)	N/A	N/A
MOTOTRBO 2.10.X Capacity Max System Server SW Upgrade	T8481A** (MyView Portal)	CMSS Upgrade Package 2.10.X*** / MOTOTRBO Capacity Max	CMSS Upgrade Package 2.10.X*** / MOTOTRBO Capacity Max
MOTOTRBO <Release> Capacity Max System Server SW Upgrade	N/A	CMSS Upgrade Package <Release> / MOTOTRBO Capacity Max	CMSS Upgrade Package <Release> / MOTOTRBO Capacity Max
HPE Switch and Router HP OS	N/A	N/A	HPE Switch and Router HP OS <Release>
Juniper Switch and Router JunOS	N/A	N/A	Juniper Switch and Router JunOS <Release>
HPE Switch Sample Configurations for Capacity Max	N/A	HPE Switch Sample Configurations for Capacity Max <Release> / MOTOTRBO Transport	HPE Switch Sample Configurations for Capacity Max <Release> / MOTOTRBO Transport
Juniper Switch and Router Sample Configurations	N/A	Juniper Switch and Router Sample Configurations <Release> / MOTOTRBO Transport	Juniper Switch and Router Sample Configurations <Release> / MOTOTRBO Transport
R2.X MPT1327 GOB Upgrade Kit	N/A	MOTOTRBO MPT1327 GOB CPS and Upgrade Kits / MOTOTRBO EMEA Software	MOTOTRBO MPT1327 GOB CPS and Upgrade Kits / MOTOTRBO EMEA Software
MPT1327 GOB CPS	N/A	MOTOTRBO MPT1327 GOB CPS and Upgrade Kits / MOTOTRBO EMEA Software	MOTOTRBO MPT1327 GOB CPS and Upgrade Kits / MOTOTRBO EMEA Software
SmartPTT PLUS	N/A****	SmartPTT Plus / MOTOTRBO Sold and Supported	SmartPTT Plus / MOTOTRBO Sold and Supported
TRBONet PLUS	N/A****	TRBONet Plus / MOTOTRBO Sold and Supported	TRBONet Plus / MOTOTRBO Sold and Supported
ConSEL PLUS	N/A****	Not available via MyView, visit https://conselplus.com/	

* Login to MyView at <https://myview.motorolasolutions.com> , expand Entitlements on the left side menu, and click Software, then check for Product Name and Product Line as described in the table

** This Capacity Max System Software can only be ordered via Order Management

*** Only becomes available if MyView Portal part number was ordered via Order Management.

**** Relevant license part numbers must be purchased to use these applications.

Motorola Solutions confidential - do not redistribute - PartnerEmpower member, customer, and prospective customer use only.

Whilst care has been taken to ensure the accuracy of the information contained in this document, Motorola Solutions retains the right to make changes at any time without notice. Availability is subject to individual country law and regulations. All specifications shown are typical unless otherwise stated and are subject to change without notice. MOTOROLA, MOTO, MOTOROLA SOLUTIONS and the Stylized M Logo are trademarks or registered trademarks of Motorola Trademark Holdings, LLC and are used under license. All other trademarks are the property of their respective owners. ©2025 Motorola Solutions, Inc. All rights reserved.

Documentation

The MOTOTRBO System Release Notes are available on MyView Portal in Entitlements / Software under Product Name and Product Line “MOTOTRBO EMEA System Release Notes” at:

<https://myview.motorolasolutions.com>

The latest MOTOTRBO User Guides, Quick Reference Guides, Basic Service Manuals, Installation Manuals, Accessory Leaflets, EME Safety Booklets, RED Leaflets, UL/TIA Manuals, ATEX Safety and Approved Accessory leaflets, System Planner (68007024085_), Radio Management System Planner (MN004686A01_) and Capacity Max System Advisor Guide (MN002730A01_) are available on the Learning Experience Portal (LXP) at:

<https://learning.motorolasolutions.com>

The latest MOTOTRBO Declaration of Conformity (DoC) documents with attached ATEX DEKRA certificates (where applicable) are available on the EMEA “Documents of Compliance” Website at:

https://www.motorolasolutions.com/en_xu/support/emea-compliance.html

Motorola Solutions confidential - do not redistribute - PartnerEmpower member, customer, and prospective customer use only.

Whilst care has been taken to ensure the accuracy of the information contained in this document, Motorola Solutions retains the right to make changes at any time without notice. Availability is subject to individual country law and regulations. All specifications shown are typical unless otherwise stated and are subject to change without notice. MOTOROLA, MOTO, MOTOROLA SOLUTIONS and the Stylized M Logo are trademarks or registered trademarks of Motorola Trademark Holdings, LLC and are used under license. All other trademarks are the property of their respective owners. ©2025 Motorola Solutions, Inc. All rights reserved.

Training Material

The following courses are available on the Learning Experience Portal (LXP) and open for enrolment to Partners and Customers.

New courses

[PCT0193 MOTOTRBO M2025.01 New Features Training](#)

Registration

Registration for these classes is open and available through the LXP at:

<https://learning.motorolasolutions.com>

Motorola Solutions confidential - do not redistribute - PartnerEmpower member, customer, and prospective customer use only.

Whilst care has been taken to ensure the accuracy of the information contained in this document, Motorola Solutions retains the right to make changes at any time without notice. Availability is subject to individual country law and regulations. All specifications shown are typical unless otherwise stated and are subject to change without notice. MOTOROLA, MOTO, MOTOROLA SOLUTIONS and the Stylized M Logo are trademarks or registered trademarks of Motorola Trademark Holdings, LLC and are used under license. All other trademarks are the property of their respective owners. ©2025 Motorola Solutions, Inc. All rights reserved.

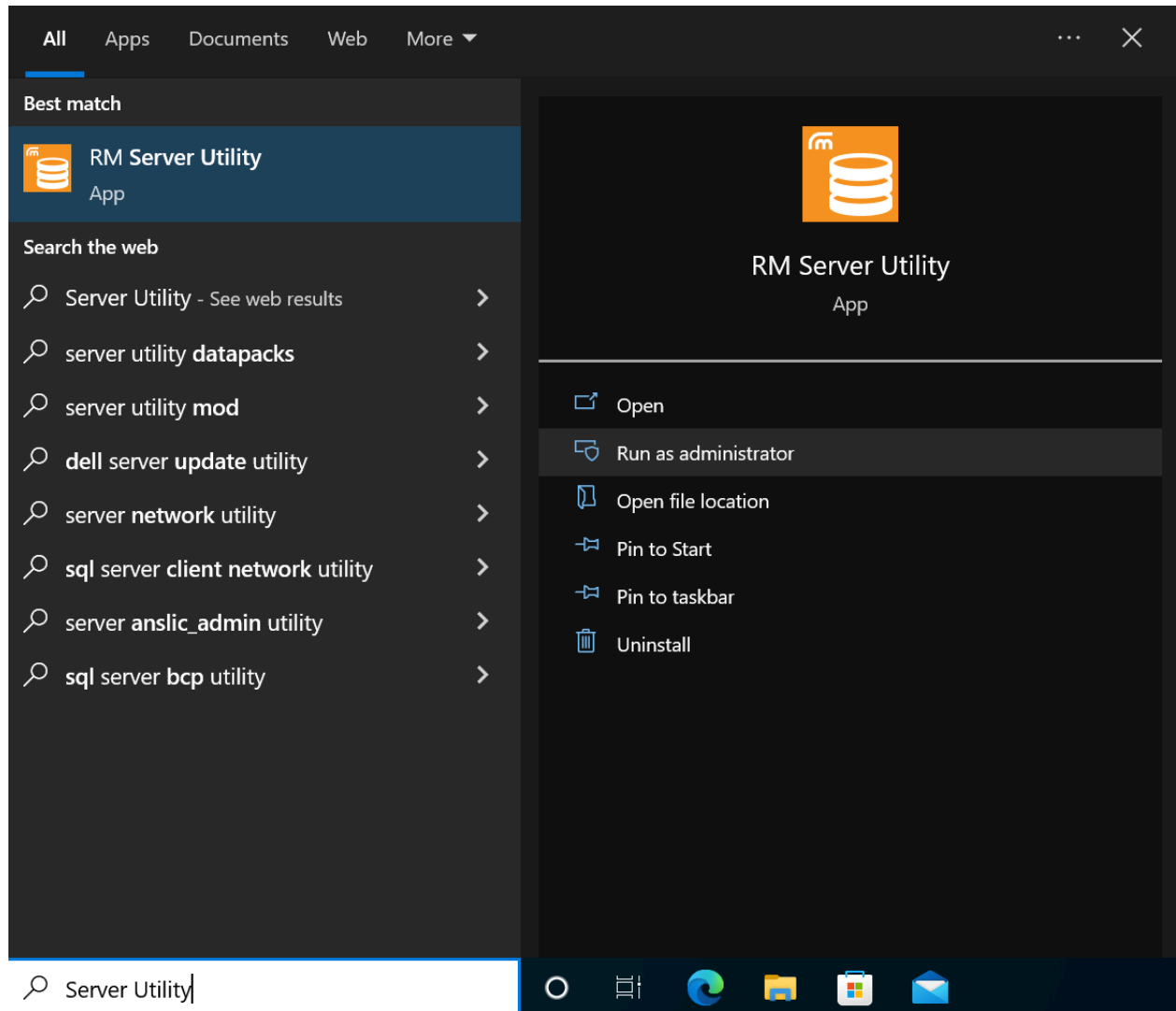
Important Notes

RM Access Control Feature Note

Important note for the customers who DO NOT need to use RM Access Control:

After upgrading an existing RM deployment to version 2.134.77.0 or later, there are some necessary steps to take to ensure normal operation, otherwise, users may not have access to the security keys and Radio View operations that they had prior to the upgrade.

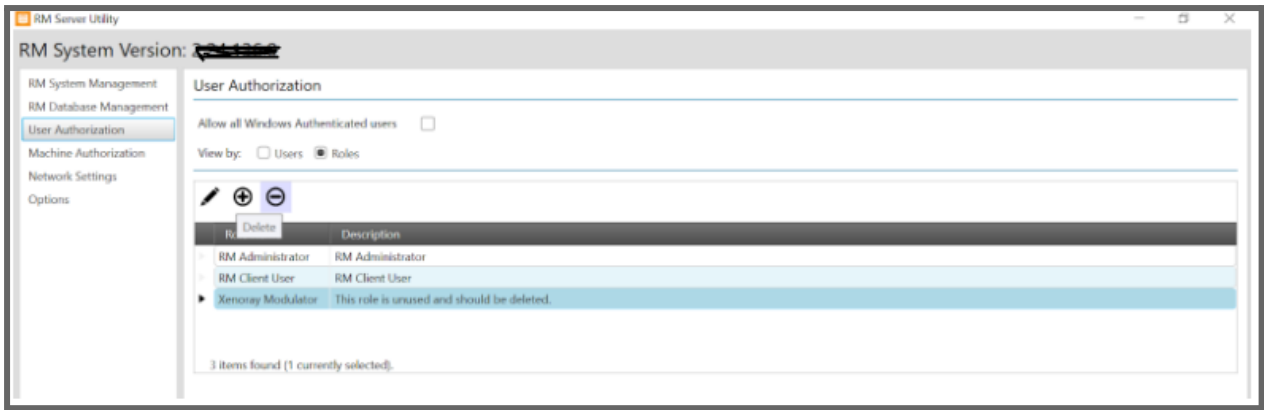
- 1) After performing the upgrade the user should open the RM Server Utility App on the machine that hosts the RM Server.



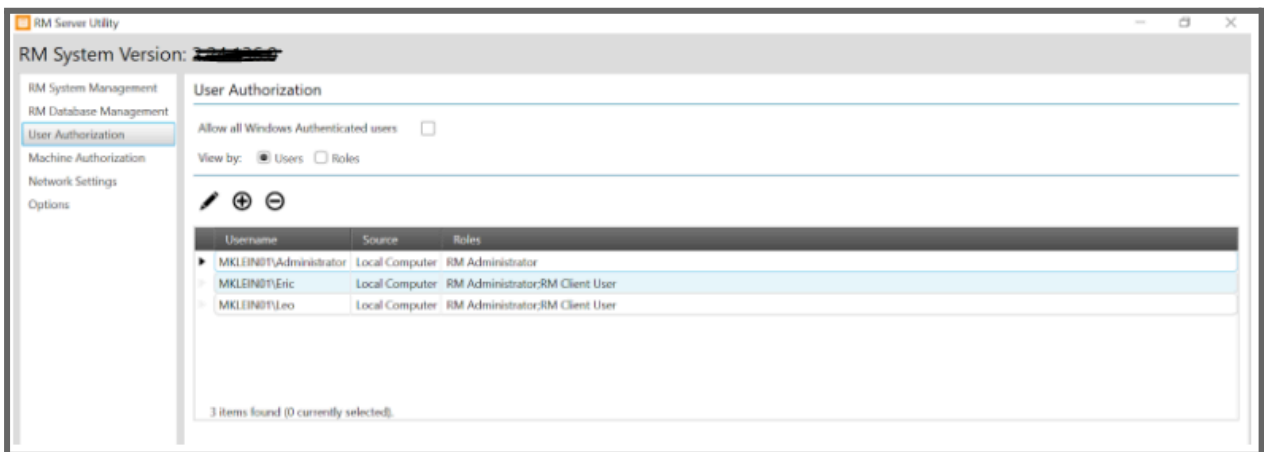
- 2) From the User Authorization tab, with the Roles radio button selected, delete any unnecessary roles that may have been created prior to the upgrade, leaving only the RM Administrator and RM Client User roles.

Motorola Solutions confidential - do not redistribute - PartnerEmpower member, customer, and prospective customer use only.

Whilst care has been taken to ensure the accuracy of the information contained in this document, Motorola Solutions retains the right to make changes at any time without notice. Availability is subject to individual country law and regulations. All specifications shown are typical unless otherwise stated and are subject to change without notice. MOTOROLA, MOTO, MOTOROLA SOLUTIONS and the Stylized M Logo are trademarks or registered trademarks of Motorola Trademark Holdings, LLC and are used under license. All other trademarks are the property of their respective owners. ©2025 Motorola Solutions, Inc. All rights reserved.



- 3) For users that do not wish to use the Access Control features at this time, select the Users radio button and ensure that each user that will be accessing RM remotely has both RM Administrator and RM Client User roles assigned to them.



- 4) This completes the necessary steps for users that do not wish to use the Access Control features. The RM Server Utility can be closed at this point. Users should be able to use the RM Configuration Client to connect to the RM Server and perform normal operations.

New Upgrade Package Zip Format

Starting from M2022.03, MSI will start to release the MOTOTRBO firmware upgrade package in zip format. Below are the instructions on how to install the firmware upgrade package.

1. Create a new folder of your choice in the C:\drive. We will use "Packages" as an example.
2. Download zip file to C:\Packages
3. Extract All

Motorola Solutions confidential - do not redistribute - PartnerEmpower member, customer, and prospective customer use only.

Whilst care has been taken to ensure the accuracy of the information contained in this document, Motorola Solutions retains the right to make changes at any time without notice. Availability is subject to individual country law and regulations. All specifications shown are typical unless otherwise stated and are subject to change without notice. MOTOROLA, MOTO, MOTOROLA SOLUTIONS and the Stylized M Logo are trademarks or registered trademarks of Motorola Trademark Holdings, LLC and are used under license. All other trademarks are the property of their respective owners. ©2025 Motorola Solutions, Inc. All rights reserved.

Name	Date modified	Type
MOTOTRBO_2.0_R0222021000_222213_Portable_NA.zip	8/30/2022 11:09 AM	Compressed (zipp...

Open

Open in new window

Extract All...

Select Left Folder for Compare

4. Open Folder

Name	Date modified	Type	Size
MOTOTRBO_2.0_R0222021000_222213_Portable_NA.zip	8/30/2022 11:09 AM	Compressed (zipp...	58,252 KB
MOTOTRBO_2.0_R0222021000_222213_Portable_NA	10/11/2022 1:45 PM	File folder	

5. Run the Exe

program files	10/11/2022 1:45 PM	File folder	
0x0409.ini	10/1/2014 11:41 AM	Configuration sett...	22 KB
MOTOTRBO 2.0 R0222021000_222213 Portable Update Packages.msi	8/30/2022 11:09 AM	Windows Installer ...	663 KB
MOTOTRBO_2.0_R0222021000_222213_Portable_NA.exe	8/30/2022 11:09 AM	Application	1,269 KB
Setup.ini	8/30/2022 11:09 AM	Configuration sett...	6 KB

6. To save space, the folder can be deleted after successful installation

Upgrades to M2020.01 Onwards

From M2020.01 onwards only products (i.e. MOTOTRBO radios, repeaters and CMSS) which are either in warranty or covered by a service package will accept software updates. Software Update Management (SUM) was introduced with the R2.10 system release and provides products with built-in intelligence to determine if they are eligible to accept a software update. Products on prior releases must therefore be upgraded to an R2.10 system release and be eligible to accept a software update before they can be upgraded to M2020.01 onwards.

Cancelled products that are still under a service contract at time of cancellation will be entitled to the software update in line with the Motorola Solutions Software Support Policy. Following cancellation only critical bug fixes will be tested for these products. Please refer to the MOTOTRBO Post Cancellation Support Policy for further information.

When a service package is purchased, a SUM license is issued and pre-registered (in the Motorola Solutions licensing database) to the product serial number. The SUM license is then available for retrieval and activation in the product using Radio Management (RM) or the Customer Programming Software 2.0 (CPS). Once a SUM license has been activated in a product, that product is then eligible to accept software updates for the duration of the MOTOTRBO Service Package.

Note: Selected radio models shipped since 18-Nov-2019 with enhanced warranties are eligible to accept software updates for a period of up-to 5 years.

Motorola Solutions confidential - do not redistribute - PartnerEmpower member, customer, and prospective customer use only.

Whilst care has been taken to ensure the accuracy of the information contained in this document, Motorola Solutions retains the right to make changes at any time without notice. Availability is subject to individual country law and regulations. All specifications shown are typical unless otherwise stated and are subject to change without notice. MOTOROLA, MOTO, MOTOROLA SOLUTIONS and the Stylized M Logo are trademarks or registered trademarks of Motorola Trademark Holdings, LLC and are used under license. All other trademarks are the property of their respective owners. ©2025 Motorola Solutions, Inc. All rights reserved.

R2.10.10 Upgrade Packages

The R2.10.10 radio upgrade packages are only able to upgrade radios already containing R2.10 system release firmware. For radios containing pre-R2.10 system release firmware they first need to be upgraded to a previous R2.10 system release before they can be upgraded to R2.10.10. This restriction does NOT apply to the R2.10.10 repeater upgrade packages.

MOTOTRBO™ CPS 2.0

The new MOTOTRBO CPS 2.0 was introduced with MOTOTRBO system release R2.10. The MOTOTRBO CPS 2.0 provisioning and license management functionality is tested for up to three previous releases while the MOTOTRBO CPS 2.0 software update support is tested for up to five previous releases.

Use of Old Archive Codeplugs

It is generally good practice to use codeplugs generated from the default codeplug associated with the latest firmware release rather than reuse very old archived codeplugs which is not recommended.

Upgrade of Early Firmware

When an upgrade spanning multiple releases is to be performed it is strongly recommended that the upgrade be performed in multiple steps spanning no more than 3 major releases.

Upgrading Radio Systems Running Applications

To avoid unforeseen issues resulting from upgrading deployed radio systems running Applications, we recommend that you check first with your Application provider to ensure that the version of Application you are running is fully compatible with the new version of radio system.

Repeater Update Duration

When updating MOTOTRBO repeaters, it's important to ensure that the update process is not interrupted until the "Device Update Successful" message appears on the CPS screen.

Repeater Knockdown

It is recommended that the Repeater is not in the Repeater Knockdown state while performing a CPS Read or Write operation.

PN, DDMS and MNIS Applications

The Device Discovery and Mobility Service (DDMS) application replaces the legacy Presence Notifier (PN) application. Additionally, the DDMS is backwards compatible with the PN such that existing applications that interface with the PN do not require any changes to receive presence notifications from the DDMS.

Motorola Solutions confidential - do not redistribute - PartnerEmpower member, customer, and prospective customer use only.

Whilst care has been taken to ensure the accuracy of the information contained in this document, Motorola Solutions retains the right to make changes at any time without notice. Availability is subject to individual country law and regulations. All specifications shown are typical unless otherwise stated and are subject to change without notice. MOTOROLA, MOTO, MOTOROLA SOLUTIONS and the Stylized M Logo are trademarks or registered trademarks of Motorola Trademark Holdings, LLC and are used under license. All other trademarks are the property of their respective owners. ©2025 Motorola Solutions, Inc. All rights reserved.

The Device Discovery and Mobility Service (DDMS) and MOTOTRBO Network Interface Service (MNIS) applications are included on the CPS 2.0 DVD and are also available to download from MyView Portal.

The DDMS and MNIS applications are not installed automatically from the CPS 2.0 DVD, instead they need to be manually installed from the Additional_Apps folder which can be easily accessed by clicking the Additional Applications button in the CPS 2.0 DVD installer.

SMA / MX Connector Antennas

Even though the SMA antennas are non-GPS, the SMA portable models still support GPS / GNSS since all DP4x01e series portables contain internal GPS / GNSS antennas.

Only SMA antennas should be attached to SMA portable models. Attaching a standard (MX) antenna to an SMA portable will damage the SMA connector centre pin on the portable.

Conversely, only standard (MX) antennas should be attached to standard (MX) portables. Attaching an SMA antenna to a standard (MX) portable will degrade performance.

Control Head Cable Flex

The cable flex (part 30012045001) supplied with older (Numeric / Colour Display) Control Head, Remote Mount Control Head and Handheld Control Heads kits is not compatible with the new DM4000e series mobiles.

To determine if a given Numeric Display Model Control Head kit is compatible with the new DM4000e series mobile radios, refer to its part number. If the part number is PMLN5677_, then the cable flex (part 30012045001) needs to be replaced with a newer cable flex (part 30012045002) before the Numeric Display Control Head kit can be used with the DM4000e series mobile radios. If the part number is PMLN7500_, then the Numeric Display Control Head kit is already compatible with the DM400e series mobiles.

To determine if a given Colour Display Model Control Head kit is compatible with the new DM4000e series mobile radios, refer to its part number. If the part number is PMLN5678_, then the cable flex (part 30012045001) needs to be replaced with a newer cable flex (part 30012045002) before the Colour Display Control Head kit can be used with the DM4000e series mobile radios. If the part number is PMLN7501_, then the Colour Display Control Head kit is already compatible with the DM400e series mobiles.

To determine if a given Remote Mount Control Head kit (PMLN6404_) is compatible with the new DM4000e series mobile radios, refer to the part number on the Remote Transceiver Interface. If the part number is PMLN6402_, then the cable flex (part 30012045001) needs to be replaced with a newer cable flex (part 30012045002) before the Remote Mount Control Head kit can be used with the DM4000e series mobile radios. If the part number is PMLN7504_, then the Remote Mount Control Head kit is already compatible with the DM400e series mobiles.

To determine if a given Handheld Control Head kit (PMLN7131_) is compatible with the new DM4000e series mobile radios, refer to the part number on the Handheld Control Head Transceiver Adapter. If the part number is PMLN7033_, then the cable flex (part 30012045001) needs to be replaced with a newer cable flex (part 30012045002) before the Handheld Control Head kit can be used with the DM4000e series mobile

Motorola Solutions confidential - do not redistribute - PartnerEmpower member, customer, and prospective customer use only.

Whilst care has been taken to ensure the accuracy of the information contained in this document, Motorola Solutions retains the right to make changes at any time without notice. Availability is subject to individual country law and regulations. All specifications shown are typical unless otherwise stated and are subject to change without notice. MOTOROLA, MOTO, MOTOROLA SOLUTIONS and the Stylized M Logo are trademarks or registered trademarks of Motorola Trademark Holdings, LLC and are used under license. All other trademarks are the property of their respective owners. ©2025 Motorola Solutions, Inc. All rights reserved.

radios. If the part number is PMLN7502_, then the Handheld Control Head kit is already compatible with the DM400e series mobiles.

RSSI Display Value

To make a MOTOTRBO subscriber display its current RSSI value, press the left arrow three times and immediately press the right arrow three times, all within 5 seconds of power up.

R2.X MPT1327 GOB Upgrade Kit

The R2.X MPT1327 GOB Upgrade Kit supports Windows 7.

When installing and launching the R2.X MPT1327 GOB Upgrade Kit on a Windows 7 computer, select “Run as administrator”.

The R1.X and R2.X MPT1327 GOB Upgrade Kits cannot be installed together on the same computer. So if the R1.X MPT1327 GOB Upgrade Kit is already installed then this will have to be un-installed before the R2.X MPT1327 GOB Upgrade Kit can be installed.

The R2.X MPT1327 GOB Upgrade Kit does NOT preserve the R2.X MPT1327 GOB configuration, so before upgrading the R2.X MPT1327 GOB firmware read the R2.X MPT1327 GOB configuration using the MPT1327 GOB CPS and save it to a *.rad file. After upgrading the R2.X MPT1327 GOB firmware, the saved *.rad file can be written back to the R2.X MPT1327 GOB using the MPT1327 GOB CPS.

MPT1327 GOB CPS

The MPT1327 GOB CPS supports Windows 7.

When installing and launching the MPT1327 GOB CPS on a Windows 7 computer, select “Run as administrator”.

MPT1327 / Connect Plus Options

Certain radio models can be ordered with factory fitted MPT1327 / Connect Plus option boards.

(NOTE: the generic option board can NOT be field upgraded to support MPT1327)

MPT1327 / Connect Plus GOB Firmware Compatibility

Where a radio contains an MPT1327 / Connect Plus option board it's important to adhere to the following simple rules in order to ensure full compatibility between the option board firmware and the radio firmware:

1. On installing an MPT1327 / Connect Plus option board, ensure that both the option board and the radio contain the latest available firmware versions.
2. On upgrading a radio to the latest available firmware version, ensure that the option board also contains the latest available firmware version.

Motorola Solutions confidential - do not redistribute - PartnerEmpower member, customer, and prospective customer use only.

Whilst care has been taken to ensure the accuracy of the information contained in this document, Motorola Solutions retains the right to make changes at any time without notice. Availability is subject to individual country law and regulations. All specifications shown are typical unless otherwise stated and are subject to change without notice. MOTOROLA, MOTO, MOTOROLA SOLUTIONS and the Stylized M Logo are trademarks or registered trademarks of Motorola Trademark Holdings, LLC and are used under license. All other trademarks are the property of their respective owners. ©2025 Motorola Solutions, Inc. All rights reserved.

3. On upgrading an option board to the latest available firmware version, ensure that the radio also contains the latest available firmware version.

Options boards for DP4000/DM4000 series radios are NOT forward compatible with DP3000e/DP4000e/DM4000e series radios and option boards for DP3000e/DP4000e/DM4000e series radios not backwards compatible with DP4000/DM4000 series radios.

Motorola Solutions confidential - do not redistribute - PartnerEmpower member, customer, and prospective customer use only.

Whilst care has been taken to ensure the accuracy of the information contained in this document, Motorola Solutions retains the right to make changes at any time without notice. Availability is subject to individual country law and regulations. All specifications shown are typical unless otherwise stated and are subject to change without notice. MOTOROLA, MOTO, MOTOROLA SOLUTIONS and the Stylized M Logo are trademarks or registered trademarks of Motorola Trademark Holdings, LLC and are used under license. All other trademarks are the property of their respective owners. ©2025 Motorola Solutions, Inc. All rights reserved.

Open (Unresolved) Issues

Open (Unresolved) issues are all known or reported issues that still exist in this current software release and may occur under certain circumstances.

Infrastructure Impact

Issue Number:	UEM-7642
System/Products:	CMSS/System Advisor
Description:	Calls are displayed with delay on Grid View opened in the System Advisor client.
Workaround:	Use a web browser to display Grid View.
Issue Number:	UEM-7788
System/Products:	CMSS/System Advisor
Description:	After the first successful network configuration of CMSS from Radio Management, a subsequent network configuration job may fail if attempted shortly afterwards.
Workaround:	Wait 20 minutes between CMSS network configuration changes.
Issue Number:	UEM-7801
System/Products:	CMSS/System Advisor
Description:	In System Advisor, the Data Gateway (MNIS) and CMSS internal components such as the Trunking Controller (TC), the Capacity Max Bridge (CMB) as well the Voice and Radio Command Gateway (VRC) may display a critical alarm indicating they need discovery or may display with an incorrect Site ID. This is caused by an unwanted interaction between the affected components' IP addressing.
Workaround:	For MNIS, change the IP address for the PC which is hosting the MNIS application. For other CMSS components, please contact Motorola Solutions technical support to troubleshoot towards identifying the affected components and their addresses.
Issue Number:	ENG_INFRA_PCR-22344
System/Products:	SLR 1000, SLR 5500 and SLR 8000 repeaters
Description:	When the repeater reboots an additional reset may be enforced which may slightly extend the reboot time.
Workaround:	No workaround is required. This is a very rare issue and the repeater automatically recovers within 20 seconds.
Issue Number:	MTN-0177-24
System/Products:	SLR 1000, SLR 5500 and SLR 8000 repeaters
Description:	When a disabled repeater is written by RM or CPS2.0 with a modified configuration or after a firmware upgrade, it becomes enabled again.
Workaround:	Disable the affected repeater again after firmware upgrade or after it has been configured by RM or CPS2.0 using RDAC or System Advisor. For further details please refer to MTN-0177-24
Issue Number:	ENG_INFRA_PCR-22295
System/Products:	SLR 1000, SLR 5500 and SLR 8000 repeaters/Capacity Plus (single- or multi-site)

Motorola Solutions confidential - do not redistribute - PartnerEmpower member, customer, and prospective customer use only.

Whilst care has been taken to ensure the accuracy of the information contained in this document, Motorola Solutions retains the right to make changes at any time without notice. Availability is subject to individual country law and regulations. All specifications shown are typical unless otherwise stated and are subject to change without notice. MOTOROLA, MOTO, MOTOROLA SOLUTIONS and the Stylized M Logo are trademarks or registered trademarks of Motorola Trademark Holdings, LLC and are used under license. All other trademarks are the property of their respective owners. ©2025 Motorola Solutions, Inc. All rights reserved.

Description: When the repeater boots up and the DHCP server is unreachable for 12 minutes (or longer) such repeater will not be connected to the system.
Workaround: Reset repeater to re-initiate obtaining an IP address.

CPS-RM / RDAC Impact

Issue Number: DMP-PCR-13580/RFC_PCR-302
System/Products: Capacity Max
Description: In Radio Management, Capacity Max talk group sites list does not have a scroll feature in "allowed site list". Users cannot scroll down the list. The beginning and the end of the window cannot be seen on the screen.
Workaround: Not Available

Radio Impact

No known issues

Resolved Issues in M2025.xx System Releases

Resolved issues are the known product problems that were reported in products releases, but have now been fixed or closed.

Resolved in M2025.xx:

Infrastructure Impact

Issue Number: MTN-0143-24 (Resolved in M2025.01)
System/Products: CMSS/ESU
Description: ESU web portal reports an error for the CMSS KVM Hypervisor being in inactive state and the validation result is failed with "CMSS01 node is not discovered."
For further details please refer to [MTN-0143-24](#).

Issue Number: MTN-0164A-24 (Resolved in M2025.01)
System/Products: CMSS/SA
Description: System Advisor fails to start after an upgrade if the system time is incorrect.
For further details please refer to [MTN-0164A-24](#).

CPS-RM / RDAC Impact

Issue Number: RFC_PCR-279/PRB0000047328
System/Product: DP540, DP1400, MOTOTRBO R2, SL1600, DP2000e series, SL2600, DP3000e series, DP4000e series, MOTOTRBO R7/R7a, DP4000Ex/DP4000Ex MA series, DM1000 series, DM2600 series and DM4000e series radios
Description: Radios read and written with the RM/CPS 2.0 version 2.151.292.0 cannot communicate with each other when the basic privacy key is set to default value ("0 - (blank)"). RM/CPS 2.0 does not mark the default value as invalid.

Motorola Solutions confidential - do not redistribute - PartnerEmpower member, customer, and prospective customer use only.

Whilst care has been taken to ensure the accuracy of the information contained in this document, Motorola Solutions retains the right to make changes at any time without notice. Availability is subject to individual country law and regulations. All specifications shown are typical unless otherwise stated and are subject to change without notice. MOTOROLA, MOTO, MOTOROLA SOLUTIONS and the Stylized M Logo are trademarks or registered trademarks of Motorola Trademark Holdings, LLC and are used under license. All other trademarks are the property of their respective owners. ©2025 Motorola Solutions, Inc. All rights reserved.

For further details please refer to [MTN-0136A-24](#).

Device Impact

Issue Number: PCR_SUB-47771/INC0000197013/INC0000208119 (Resolved in M2025.01)
System/Product: MOTOTRBO R7/R7a radios
Description: MOTOTRBO R7/R7a radios configured to the Capacity Max system intermittently stuck in the "Registering" screen until the device is power cycled.

Issue Number: PCR_SUB-48195
System/Product: DP2000e series, SL2600, DP3000e series, DP4000e series, DP4000Ex/DP4000Ex MA series, DM2600 radios and DM4000e series radios with M2024.01 release or above.
Description: Radio speaker volume will be approximately 20% (2dB) quieter if Intelligent Audio is Disabled.
For further details please refer to [MTN-0162-24](#)

Motorola Solutions confidential - do not redistribute - PartnerEmpower member, customer, and prospective customer use only.

Whilst care has been taken to ensure the accuracy of the information contained in this document, Motorola Solutions retains the right to make changes at any time without notice. Availability is subject to individual country law and regulations. All specifications shown are typical unless otherwise stated and are subject to change without notice. MOTOROLA, MOTO, MOTOROLA SOLUTIONS and the Stylized M Logo are trademarks or registered trademarks of Motorola Trademark Holdings, LLC and are used under license. All other trademarks are the property of their respective owners. ©2025 Motorola Solutions, Inc. All rights reserved.

Open Source Software Legal Notice

This media, software or hardware ("Product") obtained from Motorola Solutions, Inc. ("Motorola Solutions") may include Motorola Solutions' Software, Third Party Software (defined below), and/or Open Source Software (defined below).

The object code or source code (collectively, the "Software") included with the Product is the exclusive property of Motorola Solutions or its licensors, and any use is subject to the terms and conditions of one or more agreements in force between the purchaser of the Motorola Solutions Product or licensee of the Motorola Solutions Software and Motorola Solutions. SOFTWARE IS PROTECTED BY U.S. COPYRIGHT LAWS AND INTERNATIONAL LAWS AND TREATIES. UNAUTHORIZED COPYING, DISTRIBUTION OR OTHER USE OF THIS PRODUCT IS STRICTLY PROHIBITED. ANY DISTRIBUTION OR USE NOT SPECIFICALLY APPROVED BY MOTOROLA SOLUTIONS IS STRICTLY PROHIBITED.

Motorola Solutions' Software is subject to the commercial terms and conditions entered into with Motorola Solutions, any other use is strictly prohibited. Commercial Software licensed for redistribution by Motorola Solutions ("Third Party Software") is subject to the terms and conditions in force between Motorola Solutions and the licensor of the Third party Software. The terms and conditions governing the usage of Third Party Software may be part of the agreement entered into by the purchaser of the Product with Motorola Solutions or separate Third Party Software license agreement(s) included with the Product.

Software provided by Motorola Solutions which is covered by a publicly available license governed solely under Copyright law, whereas the complete terms and obligations of such license attach to a licensee solely through the act of copying, using and/or distribution of the licensed Software, such obligations often include one or more of attribution obligations, source code distribution obligations, copyleft obligations, and intellectual property encumbrances is referred to herein as "Open Source Software". The use of any Open Source Software is subject to the licenses, terms and conditions of the commercial agreement in force between the purchaser of the Product and Motorola Solutions as well as the terms and conditions of the corresponding license of each Open Source Software package. If there is a conflict between the terms and conditions of any commercial agreement and the terms and conditions of the Open Source Software license, the applicable Open Source Software license will take precedence. Copies of the licenses for the included Open Source Software as well as their attributions, acknowledgements, and software information details, are listed below. Motorola Solutions is required to reproduce the software licenses, acknowledgements and copyright notices as provided by the authors and owners, thus, all such information is provided in its native language form, without modification or translation.

Use of any Software is subject to acceptance of the corresponding terms associated with the Software and by using the Software you agree you have reviewed the terms and agreed to be bound by said terms.

To obtain a copy of the source code for the Open Source Software with source code distribution obligations, you may send a formal request in writing to:

Motorola Solutions, Inc.
Open Source Software Management
2000 Progress Parkway
Schaumburg, IL 60196 USA.

In your request, please include the Motorola Solutions Product name and version, along with the Open Source Software specifics, such as the Open Source Software name and version.

The source code for the Open Source Software included by Motorola Solutions may be residing on the

Motorola Solutions confidential - do not redistribute - PartnerEmpower member, customer, and prospective customer use only.

Whilst care has been taken to ensure the accuracy of the information contained in this document, Motorola Solutions retains the right to make changes at any time without notice. Availability is subject to individual country law and regulations. All specifications shown are typical unless otherwise stated and are subject to change without notice. MOTOROLA, MOTO, MOTOROLA SOLUTIONS and the Stylized M Logo are trademarks or registered trademarks of Motorola Trademark Holdings, LLC and are used under license. All other trademarks are the property of their respective owners. ©2025 Motorola Solutions, Inc. All rights reserved.

Product's installation media provided with the Product or on supplemental Product media. Please reference and review the entire Motorola Solutions Open Source Software "Legal Notices" and any corresponding "End User License Agreement" provided with the Product or the commercial agreement under which the Product was purchased for details on the availability, location and method for obtaining source code. Further, depending on the license terms of the specific Open Source Software, source code may not be provided. Please reference and review the entire Motorola Solutions Open Source Software "Legal Notices" and "End User License Agreement" to identify which Open Source Software packages have source code provided or available.

MOTOROLA, MOTOROLA SOLUTIONS and the Stylized M Logo are trademarks or registered trademarks of Motorola Trademark Holdings, LLC and are used under license. All other trademarks are the property of Motorola Solutions, Inc. or their respective owners. All rights reserved.

Motorola Solutions confidential - do not redistribute - PartnerEmpower member, customer, and prospective customer use only.

Whilst care has been taken to ensure the accuracy of the information contained in this document, Motorola Solutions retains the right to make changes at any time without notice. Availability is subject to individual country law and regulations. All specifications shown are typical unless otherwise stated and are subject to change without notice. MOTOROLA, MOTO, MOTOROLA SOLUTIONS and the Stylized M Logo are trademarks or registered trademarks of Motorola Trademark Holdings, LLC and are used under license. All other trademarks are the property of their respective owners. ©2025 Motorola Solutions, Inc. All rights reserved.