



MOTOROLA SOLUTIONS

MOTOTRBO™ System Release Notes
Professional Commercial Radios (PCR)

Version: M2024.02.01 v01
28 October 2024

EMEA Region

Contents

Scope	3
Abbreviations	4
What's New in System Release M2024.02.01	5
What's New in System Release M2024.02	6
What's New in System Release M2024.01.01	8
What's New in System Release M2024.01	9
Product Versions	12
Product Availability	17
Documentation	20
Training Material	21
Important Notes	22
Open (Unresolved) Issues	29
Resolved Issues in M2024.xx System Releases	31
Open Source Software Legal Notice	38

Motorola Solutions confidential - do not redistribute - PartnerEmpower member, customer, and prospective customer use only.

Whilst care has been taken to ensure the accuracy of the information contained in this document, Motorola Solutions retains the right to make changes at any time without notice. Availability is subject to individual country law and regulations. All specifications shown are typical unless otherwise stated and are subject to change without notice. MOTOROLA, MOTO, MOTOROLA SOLUTIONS and the Stylized M Logo are trademarks or registered trademarks of Motorola Trademark Holdings, LLC and are used under license. All other trademarks are the property of their respective owners. ©2024 Motorola Solutions, Inc. All rights reserved.

Scope

These MOTOTRBO System Release Notes cover the following MOTOTRBO products:

- DP540, DP1400, R2, SL1600, SL2600, DP4000Ex Series, MOTOTRBO R7/R7a, MOTOTRBO R2 and DP4000Ex Ma Series Portables
- DP2000e Series, DP3000e Series, DP4000e Series and SL4000e Series Portables
- MOTOTRBO Ion smart radio
- DM1000 Series and DM2600 Mobiles
- DM4000e Series Mobiles
- SLR 1000, SLR 5500 and SLR 8000 Repeaters
- Radio Management
- CPS 2.0
- Air Tracer
- Tuner
- RDAC
- Device Discovery and Mobility Service (DDMS)
- MOTOTRBO Network Interface Service (MNIS) Data Gateway
- MOTOTRBO Network Interface Service (MNIS) VRC Gateway
- MNIS Status Agent
- Capacity Max Bridge
- ESU Launchpad
- System Advisor
- System Design Tools
- Sensor Management Tool
- Second generation MOTOTRBO MPT1327 GOB
- MPT1327 GOB CPS
- Second generation MOTOTRBO Connect Plus GOB
- Connect Plus GOB CPS
- Connect Plus Infrastructure (XRC 9000 / 9100 Controller, XRT 9000 / 9100 Gateway, XRI 9100 Interconnect, Network Manager, Network Manager Connection Tool, XRT Configuration Tool)

Motorola Solutions confidential - do not redistribute - PartnerEmpower member, customer, and prospective customer use only.

Whilst care has been taken to ensure the accuracy of the information contained in this document, Motorola Solutions retains the right to make changes at any time without notice. Availability is subject to individual country law and regulations. All specifications shown are typical unless otherwise stated and are subject to change without notice. MOTOROLA, MOTO, MOTOROLA SOLUTIONS and the Stylized M Logo are trademarks or registered trademarks of Motorola Trademark Holdings, LLC and are used under license. All other trademarks are the property of their respective owners. ©2024 Motorola Solutions, Inc. All rights reserved.

Abbreviations

CPS	Customer Programming Software
CFS	Charge for Software
OTAP	Over The Air Programming
RM	Radio Management
OB	Option Board
RDAC	Repeater Diagnostics and Controls

Motorola Solutions confidential - do not redistribute - PartnerEmpower member, customer, and prospective customer use only.

Whilst care has been taken to ensure the accuracy of the information contained in this document, Motorola Solutions retains the right to make changes at any time without notice. Availability is subject to individual country law and regulations. All specifications shown are typical unless otherwise stated and are subject to change without notice. MOTOROLA, MOTO, MOTOROLA SOLUTIONS and the Stylized M Logo are trademarks or registered trademarks of Motorola Trademark Holdings, LLC and are used under license. All other trademarks are the property of their respective owners. ©2024 Motorola Solutions, Inc. All rights reserved.

What's New in System Release M2024.02.01

The M2024.02.01 release addresses an issue for MOTOTRBO R7 radios.
See "Resolved Issues in Product Release" section.

Motorola Solutions confidential - do not redistribute - PartnerEmpower member, customer, and prospective customer use only.

Whilst care has been taken to ensure the accuracy of the information contained in this document, Motorola Solutions retains the right to make changes at any time without notice. Availability is subject to individual country law and regulations. All specifications shown are typical unless otherwise stated and are subject to change without notice. MOTOROLA, MOTO, MOTOROLA SOLUTIONS and the Stylized M Logo are trademarks or registered trademarks of Motorola Trademark Holdings, LLC and are used under license. All other trademarks are the property of their respective owners. ©2024 Motorola Solutions, Inc. All rights reserved.

What's New in System Release M2024.02

RM/CPS New Features

Hide Encryption Keys in CPS on DP540, DP1400, MOTOTRBO R2, DP2000e series, DP3000e series, DP4000e series, MOTOTRBO R7/R7a, DP4000Ex series, DP4000ExMa series, SL1600, SL2600, SL4000e series, DM1000 series, DM2600, DM4000e radios

This feature addresses cybersecurity concerns about the visibility of encryption keys in Radio Configuration. In this release, all values in configuration fields that contain security key information are hidden by default.

The user can choose to protect the access to key values by applying the Key View Password for the codeplug archive. Once the password is set, the key values can only be accessed after providing the password.

The feature introduces new codeplug archive file format XCTB which supersedes old file format CTB2. Starting with this version, CPS only supports saving archive files in XCTB format. At the same time, Radio Management and CPS allow importing archives in old (CTB2) and new (XCTB) format.

Radio New Features

AI-Trained Noise Suppression on MOTOTRBO R7/R7a series

Advanced noise suppression algorithm which allows either removal of background noise for maximum voice clarity or allowing some background noise to pass through for contextual awareness.

Alias / Contact ID Display Performance Improvement for MOTOTRBO R7 display radios

It speeds up the Transmit Contact ID / Alias information appearing on a receiving display radio.

Quick Text Message Acknowledgement on MOTOTRBO R7 display radios

Improved R7 display radio user interface that is similar to DP4000e series whereby users can quickly acknowledge incoming notifications with the press of the OK button.

Enabling "Inactivity Check Timer" in Open Radio Mode on DP3000e series, DP4000e series, MOTOTRBO R7/R7a series, DP4000Ex series, DP4000ExMa series, MOTOTRBO Ion smart radio and DM4000e series

The radio's "Inactivity Check Timer" feature is now enabled by default in Capacity Max all modes.

Android Security Patch Updates for MOTOTRBO Ion smart radio

Updates through Q3 2024 have been implemented.

Infrastructure/System New Features

User authentication to access web applications on CMSS

This protects infrastructure from unauthorized access and reduces the risk of data breaches by enforcing authentication to access web applications on the CMSS.

Adding an extra layer of security by enforcing password policies and promoting the use of strong, complex passwords that are less susceptible to being compromised.

Motorola Solutions confidential - do not redistribute - PartnerEmpower member, customer, and prospective customer use only.

Whilst care has been taken to ensure the accuracy of the information contained in this document, Motorola Solutions retains the right to make changes at any time without notice. Availability is subject to individual country law and regulations. All specifications shown are typical unless otherwise stated and are subject to change without notice. MOTOROLA, MOTO, MOTOROLA SOLUTIONS and the Stylized M Logo are trademarks or registered trademarks of Motorola Trademark Holdings, LLC and are used under license. All other trademarks are the property of their respective owners. ©2024 Motorola Solutions, Inc. All rights reserved.

New Part Numbers

Part Number	Description	Delivered As	How to Order
GMVN6241N	CPS 2.0 / Radio Management (and Tools)	DVD	Partner Hub Shop
GMVN5520W	RDAC Application	DVD	Partner Hub Shop

Cybersecurity

Motorola Solutions, Inc. (MSI) has delivered a PCR MOTOTRBO 2024.02 release. MSI development and operations teams continually make security updates as needed based on evaluated threats, determine protective measures, create response capabilities, and promote compliance. MSI interacts with and participates in several US and international security organizations, such as U.S. Department of Homeland Security's National Cybersecurity & Communications Integration Center (NCCIC), National Institute of Standards and Technology (NIST), The 3rd Generation Partnership Project (3GPP), Telecommunications Industry Association (TIA), European Telecommunications Standards Institute (ETSI), Digital Mobile Radio (DMR) Security standardization, and others. Standards from the aforementioned organizations can map to security controls in international standards such as Information System Standards (ISO / IEC 27001).

The PCR MOTOTRBO 2024.02 system release includes enhancements to security based on the National Vulnerability Database and industry standards:

- Ongoing vulnerability management remediation based on network scanning security tools
- Ongoing Software Lifecycle Management improvements (3rd party software)

In addition to ongoing releases for security updates, MSI has a Bug Submission Program for external entities to disclose to MSI possible security vulnerabilities or issues. Motorola Solutions encourages researchers to use the PGP key when sending sensitive information via email. Please send all security vulnerability reports to security@motorolasolutions.com.

Motorola Solutions confidential - do not redistribute - PartnerEmpower member, customer, and prospective customer use only.

Whilst care has been taken to ensure the accuracy of the information contained in this document, Motorola Solutions retains the right to make changes at any time without notice. Availability is subject to individual country law and regulations. All specifications shown are typical unless otherwise stated and are subject to change without notice. MOTOROLA, MOTO, MOTOROLA SOLUTIONS and the Stylized M Logo are trademarks or registered trademarks of Motorola Trademark Holdings, LLC and are used under license. All other trademarks are the property of their respective owners. ©2024 Motorola Solutions, Inc. All rights reserved.

What's New in System Release M2024.01.01

Radio New Features

There are no new radio features introduced with this release.

For specific DP540 and MOTOTRBO R7/R7a radio revisions this is a "Motorola Factory Only" Release. For that reason, DP540 and MOTOTRBO R7/R7a radio recovery package only is being made available, and there is no upgrade package for DP540 and MOTOTRBO R7/R7a radios in the field.

The MOTOTRBO R2 upgrade package is only being made available to resolve issues in the field, and there are no new radio features. Please refer to the "Resolved Issues in Product Release" section.

Infrastructure/System New Features

CMSS upgrade to RHEL 8.8 EUS

In order to keep up to date with recent operating system fixes, security enhancements and new features, the CMSS OS is being upgraded to Red Hat Enterprise Linux (RHEL) version 8.8 EUS.

Motorola Solutions confidential - do not redistribute - PartnerEmpower member, customer, and prospective customer use only.

Whilst care has been taken to ensure the accuracy of the information contained in this document, Motorola Solutions retains the right to make changes at any time without notice. Availability is subject to individual country law and regulations. All specifications shown are typical unless otherwise stated and are subject to change without notice. MOTOROLA, MOTO, MOTOROLA SOLUTIONS and the Stylized M Logo are trademarks or registered trademarks of Motorola Trademark Holdings, LLC and are used under license. All other trademarks are the property of their respective owners. ©2024 Motorola Solutions, Inc. All rights reserved.

What's New in System Release M2024.01

RM/CPS New Features

Upgrade of the RM SQL Server to the latest 2022 version

The SQL Server installer included in the previous customer release version of RM installation is SQL Server 2017 Express. It has been upgraded to SQL Server 2022 Express version.

For the RDAC tool, the SQL Server version has been upgraded from the unsupported Compact edition to 2022 Express. Due to that change, the installer package size has increased. Also, the installer interface is changing.

There is also a dependency between the RM Server and RDAC installation, if they are both installed on the same machine - only one SQL installation is required, whichever is the first. Thus, during the installation of RDAC, if an older version of SQL Server is installed on the computer (because for example, there is still a previous version of RM Server installed), a message appears to upgrade the SQL Server version first and then continue the RDAC installation. When the SQL Server upgrade is planned, combine it with the RM Server upgrade as well, since the older RM Server versions are not compatible with SQL Server 2022.

The detailed instruction on how to upgrade the SQL Server, with the information about the upgrading to the Standard or Enterprise SQL edition, is described in the Radio Management System Planner (MN010425A01-AA) manual.

Support of the Windows Server 2022 for the RM

Starting from M2024.01 release, Radio Management Server supports the latest Windows Server 2022 operating system.

Radio New Features

Rental Timer on DP2000e series, DP3000e series, DP4000e series, MOTOTRBO R7/R7a, DP4000 Ex series, SL2600, SL4000e series, DM2600, and DM4000e series

Enable partners to define / limit the rental period of MOTOTRBO radios and upon expiry the radios go to inhibit state.

Radio Status Audio Announcement on Power Up on DP4000e series, MOTOTRBO R7/R7a and DP4000 Ex series

Announces channel name, radio alias and battery level when radio powers up.

MOTOTRBO R7 FKP UI/UX Improvement on Contact List Initiated Calls

Calls initiated / received and all other operations such as sending text from "Contacts" list in MOTOTRBO R7 radio menu will now revert to the previous screen similar to DP4000e series behavior rather than returning to Home screen.

Adding Partner Contact Information into the Radio (display models only) on DP2000e series, DP3000e series, DP4000e series, MOTOTRBO R7, DP4000 Ex series, DM2600 and DM4000e series

There is now a provision to enter name and phone number in RM / CPS which can be viewed from radio models with display.

Motorola Solutions confidential - do not redistribute - PartnerEmpower member, customer, and prospective customer use only.

Whilst care has been taken to ensure the accuracy of the information contained in this document, Motorola Solutions retains the right to make changes at any time without notice. Availability is subject to individual country law and regulations. All specifications shown are typical unless otherwise stated and are subject to change without notice. MOTOROLA, MOTO, MOTOROLA SOLUTIONS and the Stylized M Logo are trademarks or registered trademarks of Motorola Trademark Holdings, LLC and are used under license. All other trademarks are the property of their respective owners. ©2024 Motorola Solutions, Inc. All rights reserved.

Time and Date Audio Announcement via Programmable Button on MOTOTRBO R7

Provide Time and Date audio announcements which are informative especially on non display radios.

Configurable IMPRES Battery End of Life Warning

Radio will notify the user when the IMPRES battery is at the end of its life based on the duration predefined by the user.

- On MOTOTRBO R7 FKP radio :
QR code notification appears.
- On display models only on the following radios - DP4000e series, DP4000 Ex series, DP3000e series, DP2000e series, SL2600 and SL4000e series :
"Battery EOSL - Service Code 0101" boxed message appears.
- On non-display models only on the following radios MOTOTRBO R7 NKP / R7a, DP4000e series, DP4000 Ex series, DP3000e series, DP2000e series :
"Battery End of Service Life, Service Code 0101" voice announcement can be heard.

Infrastructure/System New Features

Expanding Capacity Max up to 750 sites

It is now possible to configure and deploy a single Capacity Max system with up to 750 RF sites.

A single active Trunking Controller supports call processing in a huge Capacity Max system with up to 750 RF sites. As previously, adding new sites requires purchasing Capacity Max Site Connection Licenses for each additional site (HKVN4314A).

Orderability of CMSS SW upgrades

CMSS Upgrade SW Packages can be now downloaded directly from MyView portal. It is no longer required to order these part numbers. Upgrading to the new SW is only possible with a valid SMA license on a server. This applies to the current M2024.01 release as well as all previous releases with the exception of R2.10 which remains orderable. Ordering SW upgrade on USB stick is no longer available.

New Part Numbers

Part Number	Description	Delivered As	How to Order
GMVN6241M	CPS 2.0 / Radio Management (and Tools)	DVD	Partner Hub Shop
GMVN5520V	RDAC Application	DVD	Partner Hub Shop

Cybersecurity

Motorola Solutions, Inc. (MSI) has delivered a PCR MOTOTRBO 2024.01 release. MSI development and operations teams continually make security updates as needed based on evaluated threats, determine protective measures, create response capabilities, and promote compliance. MSI interacts with and participates in several US and international security organizations, such as U.S. Department of Homeland Security's National Cybersecurity & Communications Integration Center (NCCIC), National Institute of

Motorola Solutions confidential - do not redistribute - PartnerEmpower member, customer, and prospective customer use only.

Whilst care has been taken to ensure the accuracy of the information contained in this document, Motorola Solutions retains the right to make changes at any time without notice. Availability is subject to individual country law and regulations. All specifications shown are typical unless otherwise stated and are subject to change without notice. MOTOROLA, MOTO, MOTOROLA SOLUTIONS and the Stylized M Logo are trademarks or registered trademarks of Motorola Trademark Holdings, LLC and are used under license. All other trademarks are the property of their respective owners. ©2024 Motorola Solutions, Inc. All rights reserved.

Standards and Technology (NIST), The 3rd Generation Partnership Project (3GPP), Telecommunications Industry Association (TIA), European Telecommunications Standards Institute (ETSI), Digital Mobile Radio (DMR) Security standardization, and others. Standards from the aforementioned organizations can map to security controls in international standards such as Information System Standards (ISO / IEC 27001).

The PCR MOTOTRBO 2024.01 system release includes enhancements to security based on the National Vulnerability Database and industry standards:

- Ongoing vulnerability management remediation based on network scanning security tools
- Ongoing Software Lifecycle Management improvements (3rd party software)

In addition to ongoing releases for security updates, MSI has a Bug Submission Program for external entities to disclose to MSI possible security vulnerabilities or issues. Motorola Solutions encourages researchers to use the PGP key when sending sensitive information via email. Please send all security vulnerability reports to security@motorolasolutions.com.

Motorola Solutions confidential - do not redistribute - PartnerEmpower member, customer, and prospective customer use only.

Whilst care has been taken to ensure the accuracy of the information contained in this document, Motorola Solutions retains the right to make changes at any time without notice. Availability is subject to individual country law and regulations. All specifications shown are typical unless otherwise stated and are subject to change without notice. MOTOROLA, MOTO, MOTOROLA SOLUTIONS and the Stylized M Logo are trademarks or registered trademarks of Motorola Trademark Holdings, LLC and are used under license. All other trademarks are the property of their respective owners. ©2024 Motorola Solutions, Inc. All rights reserved.

Product Versions

Listed below are the latest available MOTOTRBO Product Versions.

(Scroll down to the next table to see MOTOTRBO Product Versions associated with the different M2024.xx system releases)

MOTOTRBO Product	Latest version	MOTOTRBO Product	Latest version	MOTOTRBO Product	Latest version
DP540 Portables	R01.24.02.0001 (CP 24.42.03)	SLR 1000 Repeaters	R20.24.02.13 (CP 24.62.01)	Capacity Max Trunk Controller	Cmxtc-pcr_20.24.02.00-73
DP1400 Portables	R01.24.02.0001 (CP 24.42.03)	SLR 5500 Repeaters	R20.24.02.13 (CP 24.62.01)	Capacity Max System Advisor	UEM-PCR_24.02.00.69-00
MOTOTRBO R2 Portables	R02.24.02.1002 (CP 24.22.09)	SLR 8000 Repeaters	R20.24.02.13 (CP 24.62.01)	System Design Tools	06.09
SL1600 Portables	R01.24.02.0001 (CP 24.42.03)	Radio Management	2.151.292.0	Sensor Management Tool	R01.00.01
DP2000e Series Portables	R02.24.02.1002 (CP 24.22.09)	CPS 2.0	2.151.292.0	R2.X MPT1327 GOB	R01.02.06
SL2600 Portables	R02.24.02.1002 (CP 24.22.09)	Air Tracer	11.0 (Build 39)	MPT1327 GOB CPS	R02.00.05
DP3000e Series Portables	R02.24.02.1002 (CP 24.22.09)	Tuner	24.2 (Build 12)	R2.X Connect Plus GOB	R02.07.38 (CP 1.1.19)
DP4000e Series Portables	R02.24.02.1002 (CP 24.22.09)	RDAC	24.2 (Build 7)	R2.X Connect Plus GOB CPS	R02.07.43
MOTOTRBO R7/R7a Portables	R02.24.02.1005 (CP 24.22.09)	Device Discovery and Mobility Service (DDMS)	R24.02.0003	XRC 9000 / 9100 Controller	R02.100.05.1036_1695
DP4000Ex/DP4000 Ex MA Series Portables	R02.24.02.1002 (CP 24.22.09)	MOTOTRBO Network Interface Service (MNIS) Data Gateway	R24.02.0015	XRT 9000 / 9100 Gateway	R02.100.05.1036_1695
SL4000e Series Portables	R02.24.02.1002 (CP 24.22.09)	MOTOTRBO Network Interface Service (MNIS) Status Agent	R22.3.1	XRI 9100 Interconnect	R02.100.05.1030
MOTOTRBO Ion smart radio	R03.20.00 / R02.24.01.4000 (CP 24.21.04)	Capacity Max ESU Launchpad	DESU_LP-R17.18.10.56-02.rhel.iso	Network Manager (merged with XRC / XRI packages)	R02.100.05.1030
DM1000 Series Mobiles	R01.24.02.0001 (CP 24.42.03)	Capacity Max System Server Installer Software Image	PC435S0EI000202011.iso	Network Manager Connection Tool	R02.100.05.1030
DM2600 Mobiles	R02.24.02.1002 (CP 24.22.09)	MNIS Voice and Radio Command (VRC) Gateway	PCR-MNIS_24.02.00.00-38	XRT Configuration Tool	R02.100.05.1030
DM4000e Series Mobiles	R02.24.02.1002 (CP 24.22.09)	Capacity Max ESU	ESU-PCR_24.02.25.02-68		

Motorola Solutions confidential - do not redistribute - PartnerEmpower member, customer, and prospective customer use only.

Whilst care has been taken to ensure the accuracy of the information contained in this document, Motorola Solutions retains the right to make changes at any time without notice. Availability is subject to individual country law and regulations. All specifications shown are typical unless otherwise stated and are subject to change without notice. MOTOROLA, MOTO, MOTOROLA SOLUTIONS and the Stylized M Logo are trademarks or registered trademarks of Motorola Trademark Holdings, LLC and are used under license. All other trademarks are the property of their respective owners. ©2024 Motorola Solutions, Inc. All rights reserved.

Listed below are all MOTOTRBO Product Versions associated with the different M2024.xx system releases. For products marked “-” in this table there were no new versions introduced with a system release.

MOTOTRBO Product	M2024.01	M2024.01.01	M2024.02	M2024.02.01
DP540 Portables	R01.24.01.0000 (CP 23.42.04)	R01.24.01.3000 R01.24.01.3002 (CP 23.42.07)	R01.24.02.0001 (CP 24.42.03)	-
DP1400 Portables	R01.24.01.0000 (CP 23.42.04)	-	R01.24.02.0001 (CP 24.42.03)	-
MOTOTRBO R2 Portables	R02.24.01.1002 (CP 24.21.04)	R02.24.01.3002 R02.24.01.3003 (CP 24.21.04)	R02.24.02.1002 (CP 24.22.09)	-
SL1600 Portables	R01.24.01.0000 (CP 23.42.04)	-	R01.24.02.0001 (CP 24.42.03)	-
DP2000e Series Portables	R02.24.01.1002 (CP 24.21.04)	-	R02.24.02.1002 (CP 24.22.09)	-
SL2600 Portables	R02.24.01.1002 (CP 24.21.04)	-	R02.24.02.1002 (CP 24.22.09)	-
DP3000e Series Portables	R02.24.01.1002 (CP 24.21.04)	-	R02.24.02.1002 (CP 24.22.09)	-
DP4000e Series Portables	R02.24.01.1002 (CP 24.21.04)	-	R02.24.02.1002 (CP 24.22.09)	-
MOTOTRBO R7/R7a Portables	R02.24.01.1002 (CP 24.21.04)	R02.24.01.1003 (CP 24.21.04)	R02.24.02.1002 (CP 24.22.09)	R02.24.02.1005 (CP 24.22.09)
DP4000Ex/DP4000 Ex MA Series Portables	R02.24.01.1002 (CP 24.21.04)	-	R02.24.02.1002 (CP 24.22.09)	-
SL4000e Series Portables	R02.24.01.1002 (CP 24.21.04)	-	R02.24.02.1002 (CP 24.22.09)	-
MOTOTRBO Ion smart radio	R03.00.01 / R02.24.01.2001 (CP 24.21.04)	-	R03.20.00 / R02.24.01.4000 (CP 24.21.04)	-
DM1000 Series Mobiles	R01.24.01.0000 (CP 23.42.04)	-	R01.24.02.0001 (CP 24.42.03)	-
DM2600 Mobiles	R02.24.01.1002 (CP 24.21.04)	-	R02.24.02.1002 (CP 24.22.09)	-
DM4000e Series Mobiles	R02.24.01.1002 (CP 24.21.04)	-	R02.24.02.1002 (CP 24.22.09)	-
SLR 1000 Repeaters	R20.24.01.03 (CP 23.62.02)	-	R20.24.02.13 (CP 24.62.01)	-
SLR 5500 Repeaters	R20.24.01.03 (CP 23.62.02)	-	R20.24.02.13 (CP 24.62.01)	-
SLR 8000 Repeaters	R20.24.01.03 (CP 23.62.02)	-	R20.24.02.13 (CP 24.62.01)	-
Radio Management	2.146.122.0	-	2.151.292.0	-
CPS 2.0	2.146.122.0	-	2.151.292.0	-
Air Tracer	-	-	-	-
Tuner	24.1 (Build 2)	-	24.2 (Build 12)	-
RDAC	24.1 (Build 2)	-	24.2 (Build 7)	-
Device Discovery and Mobility Service (DDMS)	R24.01.0005	-	R24.02.0003	-
MOTOTRBO Network Interface	R24.01.0023	-	R24.02.0015	-

Motorola Solutions confidential - do not redistribute - PartnerEmpower member, customer, and prospective customer use only.

Whilst care has been taken to ensure the accuracy of the information contained in this document, Motorola Solutions retains the right to make changes at any time without notice. Availability is subject to individual country law and regulations. All specifications shown are typical unless otherwise stated and are subject to change without notice. MOTOROLA, MOTO, MOTOROLA SOLUTIONS and the Stylized M Logo are trademarks or registered trademarks of Motorola Trademark Holdings, LLC and are used under license. All other trademarks are the property of their respective owners. ©2024 Motorola Solutions, Inc. All rights reserved.

Service (MNIS) Data Gateway				
MOTOTRBO Network Interface Service (MNIS) Status Agent	–	–	–	–
Capacity Max ESU Launchpad	DESU_LP-R17.18.1 0.56-02.rhel.iso	–	–	–
Capacity Max System Server Installer Software Image	PC435S0EI000202 009.iso	PC435S0EI000202 010.iso	PC435S0EI000202 011.iso	–
MNIS Voice and Radio Command (VRC) Gateway	PCR-MNIS_20.24. 01.00-05	PCR-MNIS_24.01. 01.00-12	PCR-MNIS_24.02. 00.00-38	–
Capacity Max ESU	ESU-PCR_24.01.18 .10-68	ESU-PCR_24.01.25 .02-44	ESU-PCR_24.02.25 .02-68	–
Capacity Max Trunk Controller	Cmxtc-pcr_20.24. 01.00-26	Cmxtc-pcr_20.24. 01.10-42	Cmxtc-pcr_20.24. 02.00-73	–
Capacity Max System Advisor	UEM-PCR_20.24.0 1.16-00	UEM-PCR_24.01.0 1.36-00	UEM-PCR_24.02.0 0.69-00	–
System Design Tools	–	–	–	–
Sensor Management Tool	–	–	–	–
R2.X MPT1327 GOB	–	–	–	–
MPT1327 GOB CPS	–	–	–	–
R2.X Connect Plus GOB	–	–	–	–
R2.X Connect Plus GOB CPS	–	–	–	–
XRC 9000 / 9100 Controller	–	–	–	–
XRT 9000 / 9100 Gateway	–	–	–	–
XRI 9100 Interconnect	–	–	–	–
Network Manager (merged with XRC / XRI packages)	–	–	–	–
Network Manager Connection Tool	–	–	–	–
XRT Configuration Tool	–	–	–	–

3 rd Party Application	M2024.01	M2024.01.01	M2024.02	M2024.02.01
SmartPTT PLUS	9.14.0.62	–	–	–
TRBOnet PLUS	6.2.1.7429	–	6.2.2.7479	–
ConSEL PLUS	v7r69.3	–	v7r84.2	–

Motorola Solutions confidential - do not redistribute - PartnerEmpower member, customer, and prospective customer use only.

Whilst care has been taken to ensure the accuracy of the information contained in this document, Motorola Solutions retains the right to make changes at any time without notice. Availability is subject to individual country law and regulations. All specifications shown are typical unless otherwise stated and are subject to change without notice. MOTOROLA, MOTO, MOTOROLA SOLUTIONS and the Stylized M Logo are trademarks or registered trademarks of Motorola Trademark Holdings, LLC and are used under license. All other trademarks are the property of their respective owners. ©2024 Motorola Solutions, Inc. All rights reserved.

Notes:

1. From M2020.01 onwards only products (i.e. MOTOTRBO radios, repeaters and CMSS) which are either in warranty or covered by a service package will accept software updates. Software Update Management (SUM) was introduced with the R2.10 system release and provides products with built-in intelligence to determine if they are eligible to accept a software update. Products on prior releases must therefore be upgraded to an R2.10 system release and be eligible to accept a software update before they can be upgraded to M2020.01 onwards.
2. The Capacity Max System Advisor (SA) client is not accessible for the System View, Grid View and Alarm Details view if Java version 8u211 or newer is used on the PC where the SA client resides. Downgrading Java to any version between and including 8u181 and 8u201 will work fine.
3. In M2024.01 fault management of CX6000-24G, ARUBA-2530-24, MSR2003, MSR2003X and MSR3016 was added to the System Advisor. To use it, SNMP shall be enabled in those network equipment configurations. For details please refer to Chapter 8 "Configuration Description for HPE infrastructure" in MOTOTRBO™ CAPACITY MAX Installation and Configuration manual. After enabling SNMP on network equipment, devices should be rediscovered in System Advisor using the context menu on System View or Network Database view. For details please refer to the System Advisor manual. Equipment without SNMP enabled will show up as Gray in System Advisor
4. With R2.8.0 and newer repeater releases, it is recommended to use USB 2.0 or USB 3.0 ports on the PC or connect repeater via USB 2.0 hub when upgrading the repeater via USB.
5. For CMSS (Capacity Max System Server):
 - a. Access to the MSI MyView portal to download MOTOTRBO M2024.02 Capacity Max System Server SW Upgrade as software iso image
6. For the PC used for CMSS upgrade only from M2022.01 and M2022.03 to M2024.02 (note: upgrading from 2023.01, M2024.01 and M2024.01.01 to M2024.02 does not require ESU-LP):
 - a. If ESU-LP is required, order (1) T8486A, MOTOTRBO Capacity Max System Server SW Update Launch Pad which contains the ESU LP software files on a DVD.
 - b. Alternatively, for customers with access to the MSI MyView portal, you can order (1) T8483B, MOTOTRBO Capacity Max System Server SW Update Launch Pad where you will receive an e-mail with a unique link to access/download the ESU LP application files from the MyView portal. The T8483B will require an e-mail address at time of order.
 - c. Please refer to the section "Capacity Max System Upgrade from M2022.01, M2022.03, M2023.01, M2024.01 or M2024.01.01 to M2024.02" of Capacity Max System Release Upgrade Guide for additional details. It is available on Learning Experience Portal (LXP).
 - d. NOTICE: The DVD (T8486A) can take 2-3 weeks for delivery while the downloadable file via the MyView portal (T8483B) is generally available within a week. Please plan ahead and take the delivery times into consideration before scheduling your upgrade
 - e. The ESU Launchpad About page describes the target CMSS versions that it supports to ensure the appropriate ESU Launchpad version is ordered along with the CMSS upgrade installation files.

The feature sets supported in the release are compliant with the versions of ETSI DMR standard specifications listed below. Note that DMR Tier 3 protocol versions are not necessarily backwards compatible; it is recommended to ensure the supported protocol versions are compatible if using another manufacturer's infrastructure or subscribers.

Motorola Solutions confidential - do not redistribute - PartnerEmpower member, customer, and prospective customer use only.

Whilst care has been taken to ensure the accuracy of the information contained in this document, Motorola Solutions retains the right to make changes at any time without notice. Availability is subject to individual country law and regulations. All specifications shown are typical unless otherwise stated and are subject to change without notice. MOTOROLA, MOTO, MOTOROLA SOLUTIONS and the Stylized M Logo are trademarks or registered trademarks of Motorola Trademark Holdings, LLC and are used under license. All other trademarks are the property of their respective owners. ©2024 Motorola Solutions, Inc. All rights reserved.

ETSI DMR Specification	M2024.01	M2024.02
TS 102 361-1: the DMR air interface protocol	v2.6.1	v2.6.1
TS 102 361-2: the DMR voice and generic services and facilities	v2.5.1	v2.5.1
TS 102 361-3: the DMR data protocol	v1.3.1	v1.3.1
TS 102 361-4: the DMR trunking protocol	v1.7.1 ~ 1.12.1	v1.7.1 ~ 1.12.1

Motorola Solutions confidential - do not redistribute - PartnerEmpower member, customer, and prospective customer use only.

Whilst care has been taken to ensure the accuracy of the information contained in this document, Motorola Solutions retains the right to make changes at any time without notice. Availability is subject to individual country law and regulations. All specifications shown are typical unless otherwise stated and are subject to change without notice. MOTOROLA, MOTO, MOTOROLA SOLUTIONS and the Stylized M Logo are trademarks or registered trademarks of Motorola Trademark Holdings, LLC and are used under license. All other trademarks are the property of their respective owners. ©2024 Motorola Solutions, Inc. All rights reserved.

Product Availability

The following table indicates which MOTOTRBO products covered by this document are set up as orderable parts (to order via Partner Hub Shop / Order Management) and which are available to download from MyView Portal.

MOTOTRBO Product	Orderable Part Number	MyView Portal* (up to M2021.04) Product Name / Product Line	MyView Portal* (currently or from M2022.01) Product Name / Product Line
Upgrade Package for DP540, DP1400 and SL1600 Portables	N/A	MOTOTRBO EMEA Commercial Devices Release <Release> / MOTOTRBO EMEA Commercial Devices	MOTOTRBO EMEA Devices Release <Release> / MOTOTRBO EMEA Devices
Upgrade Package for MOTOTRBO R2, DP2000e Series, SL2600, DP3000e Series, DP4000e Series, MOTOTRBO R7/R7a, DP4000Ex Series and DP4000Ex Ma Series Portables	N/A	MOTOTRBO EMEA Professional Devices Release <Release> / MOTOTRBO EMEA Professional Devices	MOTOTRBO EMEA Devices Release <Release> / MOTOTRBO EMEA Devices
Upgrade Package for SL4000e Series Portables	N/A	MOTOTRBO EMEA Professional Devices Release <Release> / MOTOTRBO EMEA Professional Devices	MOTOTRBO EMEA Devices Release <Release> / MOTOTRBO EMEA Devices
MOTOTRBO Ion smart radio	N/A	N/A	MOTOTRBO EMEA Devices Release <Release> / MOTOTRBO EMEA Devices
Upgrade Package for DM1000 Series Mobiles	N/A	MOTOTRBO EMEA Commercial Devices Release <Release> / MOTOTRBO EMEA Commercial Devices	MOTOTRBO EMEA Devices Release <Release> / MOTOTRBO EMEA Devices
Upgrade Package for DM2600 Mobiles	N/A	MOTOTRBO EMEA Professional Devices Release <Release> / MOTOTRBO EMEA Professional Devices	MOTOTRBO EMEA Devices Release <Release> / MOTOTRBO EMEA Devices
Upgrade Package for DM4000e Series Mobiles	N/A	MOTOTRBO EMEA Professional Devices Release <Release> / MOTOTRBO EMEA Professional Devices	MOTOTRBO EMEA Devices Release <Release> / MOTOTRBO EMEA Devices
Upgrade Package for SLR 1000, SLR 5500 and SLR 8000 Repeaters	N/A	MOTOTRBO EMEA Repeaters Release <Release> / MOTOTRBO EMEA Repeaters	MOTOTRBO EMEA Repeaters Release <Release> / MOTOTRBO EMEA Repeaters
RDAC	GMVN5520_ (DVD)	N/A	N/A
CPS 2.0	GMVN6241_ (DVD)	MOTOTRBO EMEA Software Release <Release> / MOTOTRBO EMEA Software	MOTOTRBO CPS and RM Release <Release> / MOTOTRBO CPS and RM
Radio Management	GMVN6241_ (DVD)	MOTOTRBO EMEA Software Release <Release> / MOTOTRBO EMEA Software	MOTOTRBO CPS and RM Release <Release> / MOTOTRBO Software
Air Tracer	GMVN6241_ (DVD)	MOTOTRBO EMEA General Software Tools / MOTOTRBO EMEA Software	MOTOTRBO EMEA General Software Tools / MOTOTRBO EMEA Software
Tuner	GMVN6241_ (DVD)	MOTOTRBO EMEA General Software Tools / MOTOTRBO EMEA Software	MOTOTRBO EMEA General Software Tools / MOTOTRBO EMEA Software
Device Discovery Mobility Service (DDMS)	GMVN6241_ (DVD)	MOTOTRBO EMEA General Software Tools / MOTOTRBO EMEA Software	MOTOTRBO EMEA General Software Tools / MOTOTRBO EMEA Software

Motorola Solutions confidential - do not redistribute - PartnerEmpower member, customer, and prospective customer use only.

Whilst care has been taken to ensure the accuracy of the information contained in this document, Motorola Solutions retains the right to make changes at any time without notice. Availability is subject to individual country law and regulations. All specifications shown are typical unless otherwise stated and are subject to change without notice. MOTOROLA, MOTO, MOTOROLA SOLUTIONS and the Stylized M Logo are trademarks or registered trademarks of Motorola Trademark Holdings, LLC and are used under license. All other trademarks are the property of their respective owners. ©2024 Motorola Solutions, Inc. All rights reserved.

MOTOTRBO Network Interface Service (MNIS) Data Gateway	GMVN6241_ (DVD)	MOTOTRBO EMEA General Software Tools / MOTOTRBO EMEA Software	MOTOTRBO EMEA General Software Tools / MOTOTRBO EMEA Software
MOTOTRBO Network Interface Service (MNIS) Status Agent	GMVN6241_ (DVD)	MOTOTRBO EMEA General Software Tools / MOTOTRBO EMEA Software	MOTOTRBO EMEA General Software Tools / MOTOTRBO EMEA Software
MOTOTRBO Capacity Max System Server SW Update Launch Pad	T8486A** (DVD)	N/A	N/A
MOTOTRBO Capacity Max System Server SW Update Launch Pad	T8483B** (MyView Portal)	ESU Launchpad 1.0 (<Release>)***/ MOTOTRBO Capacity Max	ESU Launchpad 1.0 (<Release>)***/ MOTOTRBO Capacity Max
MOTOTRBO Capacity Max System Server (CMSS) Windows Update	T8735A** (DVD)	N/A	N/A
MOTOTRBO Capacity Max System Server (CMSS) Windows Update	T8736B** (MyView Portal)	CMSS Windows Motopatch*** / MOTOTRBO Capacity Max	CMSS Windows Motopatch*** / MOTOTRBO Capacity Max
MOTOTRBO 2.9.X Capacity Max System Server SW Upgrade	N/A	CMSS Upgrade Package 2.9.8 Full / MOTOTRBO Capacity Max	CMSS Upgrade Package 2.9.8 Full / MOTOTRBO Capacity Max
MOTOTRBO 2.10.X Capacity Max System Server SW Upgrade	T8482A** (USB & DVD)	N/A	N/A
MOTOTRBO 2.10.X Capacity Max System Server SW Upgrade	T8481A** (MyView Portal)	CMSS Upgrade Package 2.10.X*** / MOTOTRBO Capacity Max	CMSS Upgrade Package 2.10.X*** / MOTOTRBO Capacity Max
MOTOTRBO M2020.01 Capacity Max System Server SW Upgrade	N/A	CMSS Upgrade Package M2020.01 / MOTOTRBO Capacity Max	CMSS Upgrade Package M2020.01 / MOTOTRBO Capacity Max
MOTOTRBO M2020.02 Capacity Max System Server SW Upgrade	N/A	CMSS Upgrade Package M2020.02 / MOTOTRBO Capacity Max	CMSS Upgrade Package M2020.02 / MOTOTRBO Capacity Max
MOTOTRBO M2021.01 Capacity Max System Server SW Upgrade	N/A	CMSS Upgrade Package M2021.01 / MOTOTRBO Capacity Max	CMSS Upgrade Package M2021.01 / MOTOTRBO Capacity Max
MOTOTRBO M2021.02 Capacity Max System Server SW Upgrade	N/A	CMSS Upgrade Package M2021.02 / MOTOTRBO Capacity Max	CMSS Upgrade Package M2021.02 / MOTOTRBO Capacity Max
MOTOTRBO M2021.04 Capacity Max System Server SW Upgrade	N/A	CMSS Upgrade Package M2021.04 / MOTOTRBO Capacity Max	CMSS Upgrade Package M2021.04 / MOTOTRBO Capacity Max
MOTOTRBO M2022.01 Capacity Max System Server SW Upgrade	N/A	CMSS Upgrade Package M2022.01 / MOTOTRBO Capacity Max	CMSS Upgrade Package M2022.01 / MOTOTRBO Capacity Max
MOTOTRBO M2022.03 Capacity Max System Server SW Upgrade	N/A	CMSS Upgrade Package M2022.03 / MOTOTRBO Capacity Max	CMSS Upgrade Package M2022.03 / MOTOTRBO Capacity Max
MOTOTRBO M2023.01 Capacity Max System Server SW Upgrade	N/A	CMSS Upgrade Package M2023.01 / MOTOTRBO Capacity Max	CMSS Upgrade Package M2023.01 / MOTOTRBO Capacity Max
MOTOTRBO M2024.01 Capacity Max System Server SW Upgrade	N/A	CMSS Upgrade Package M2024.01 / MOTOTRBO Capacity Max	CMSS Upgrade Package M2024.01 / MOTOTRBO Capacity Max
MOTOTRBO M2024.02 Capacity Max System Server SW Upgrade	N/A	CMSS Upgrade Package M2024.02 / MOTOTRBO Capacity Max	CMSS Upgrade Package M2024.02 / MOTOTRBO Capacity Max
HPE Switch Sample Configurations for Capacity Max	N/A	HPE Switch Sample Configurations for Capacity Max <Release> / MOTOTRBO Transport	HPE Switch Sample Configurations for Capacity Max <Release> / MOTOTRBO Transport

Motorola Solutions confidential - do not redistribute - PartnerEmpower member, customer, and prospective customer use only.

Whilst care has been taken to ensure the accuracy of the information contained in this document, Motorola Solutions retains the right to make changes at any time without notice. Availability is subject to individual country law and regulations. All specifications shown are typical unless otherwise stated and are subject to change without notice. MOTOROLA, MOTO, MOTOROLA SOLUTIONS and the Stylized M Logo are trademarks or registered trademarks of Motorola Trademark Holdings, LLC and are used under license. All other trademarks are the property of their respective owners. ©2024 Motorola Solutions, Inc. All rights reserved.

Juniper Switch and Router Sample Configurations	N/A	Juniper Switch and Router Sample Configurations <Release> / MOTOTRBO Transport	Juniper Switch and Router Sample Configurations <Release> / MOTOTRBO Transport
R2.X MPT1327 GOB Upgrade Kit	N/A	MOTOTRBO MPT1327 GOB CPS and Upgrade Kits / MOTOTRBO EMEA Software	MOTOTRBO MPT1327 GOB CPS and Upgrade Kits / MOTOTRBO EMEA Software
MPT1327 GOB CPS	N/A	MOTOTRBO MPT1327 GOB CPS and Upgrade Kits / MOTOTRBO EMEA Software	MOTOTRBO MPT1327 GOB CPS and Upgrade Kits / MOTOTRBO EMEA Software
SmartPTT PLUS	N/A****	SmartPTT Plus / MOTOTRBO Sold and Supported	SmartPTT Plus / MOTOTRBO Sold and Supported
TRBONet PLUS	N/A****	TRBONet Plus / MOTOTRBO Sold and Supported	TRBONet Plus / MOTOTRBO Sold and Supported
ConSEL PLUS	N/A****	Not available via MyView, visit https://conselplus.com/	

* Login to MyView at <https://myview.motorolasolutions.com> , expand Entitlements on the left side menu, and click Software, then check for Product Name and Product Line as described in the table

** This Capacity Max System Software can only be ordered via Order Management

*** Only becomes available if MyView Portal part number was ordered via Order Management.

**** Relevant license part numbers must be purchased to use these applications.

Motorola Solutions confidential - do not redistribute - PartnerEmpower member, customer, and prospective customer use only.

Whilst care has been taken to ensure the accuracy of the information contained in this document, Motorola Solutions retains the right to make changes at any time without notice. Availability is subject to individual country law and regulations. All specifications shown are typical unless otherwise stated and are subject to change without notice. MOTOROLA, MOTO, MOTOROLA SOLUTIONS and the Stylized M Logo are trademarks or registered trademarks of Motorola Trademark Holdings, LLC and are used under license. All other trademarks are the property of their respective owners. ©2024 Motorola Solutions, Inc. All rights reserved.

Documentation

The MOTOTRBO System Release Notes are available on MyView Portal in Entitlements / Software under Product Name and Product Line “MOTOTRBO EMEA System Release Notes” at:

<https://myview.motorolasolutions.com>

The latest MOTOTRBO User Guides, Quick Reference Guides, Basic Service Manuals, Installation Manuals, Accessory Leaflets, EME Safety Booklets, RED Leaflets, UL/TIA Manuals, ATEX Safety and Approved Accessory leaflets, System Planner (68007024085_), Radio Management System Planner (MN004686A01_) and Capacity Max System Advisor Guide (MN002730A01_) are available on the Learning Experience Portal (LXP) at:

<https://learning.motorolasolutions.com>

The latest MOTOTRBO Declaration of Conformity (DoC) documents with attached ATEX DEKRA certificates (where applicable) are available on the EMEA “Documents of Compliance” Website at:

https://www.motorolasolutions.com/en_xu/support/emea-compliance.html

Motorola Solutions confidential - do not redistribute - PartnerEmpower member, customer, and prospective customer use only.

Whilst care has been taken to ensure the accuracy of the information contained in this document, Motorola Solutions retains the right to make changes at any time without notice. Availability is subject to individual country law and regulations. All specifications shown are typical unless otherwise stated and are subject to change without notice. MOTOROLA, MOTO, MOTOROLA SOLUTIONS and the Stylized M Logo are trademarks or registered trademarks of Motorola Trademark Holdings, LLC and are used under license. All other trademarks are the property of their respective owners. ©2024 Motorola Solutions, Inc. All rights reserved.

Training Material

The following courses are available on the Learning Experience Portal (LXP) and open for enrolment to Partners and Customers.

New courses

N/A

Registration

Registration for these classes is open and available through the LXP at:

<https://learning.motorolasolutions.com>

Motorola Solutions confidential - do not redistribute - PartnerEmpower member, customer, and prospective customer use only.

Whilst care has been taken to ensure the accuracy of the information contained in this document, Motorola Solutions retains the right to make changes at any time without notice. Availability is subject to individual country law and regulations. All specifications shown are typical unless otherwise stated and are subject to change without notice. MOTOROLA, MOTO, MOTOROLA SOLUTIONS and the Stylized M Logo are trademarks or registered trademarks of Motorola Trademark Holdings, LLC and are used under license. All other trademarks are the property of their respective owners. ©2024 Motorola Solutions, Inc. All rights reserved.

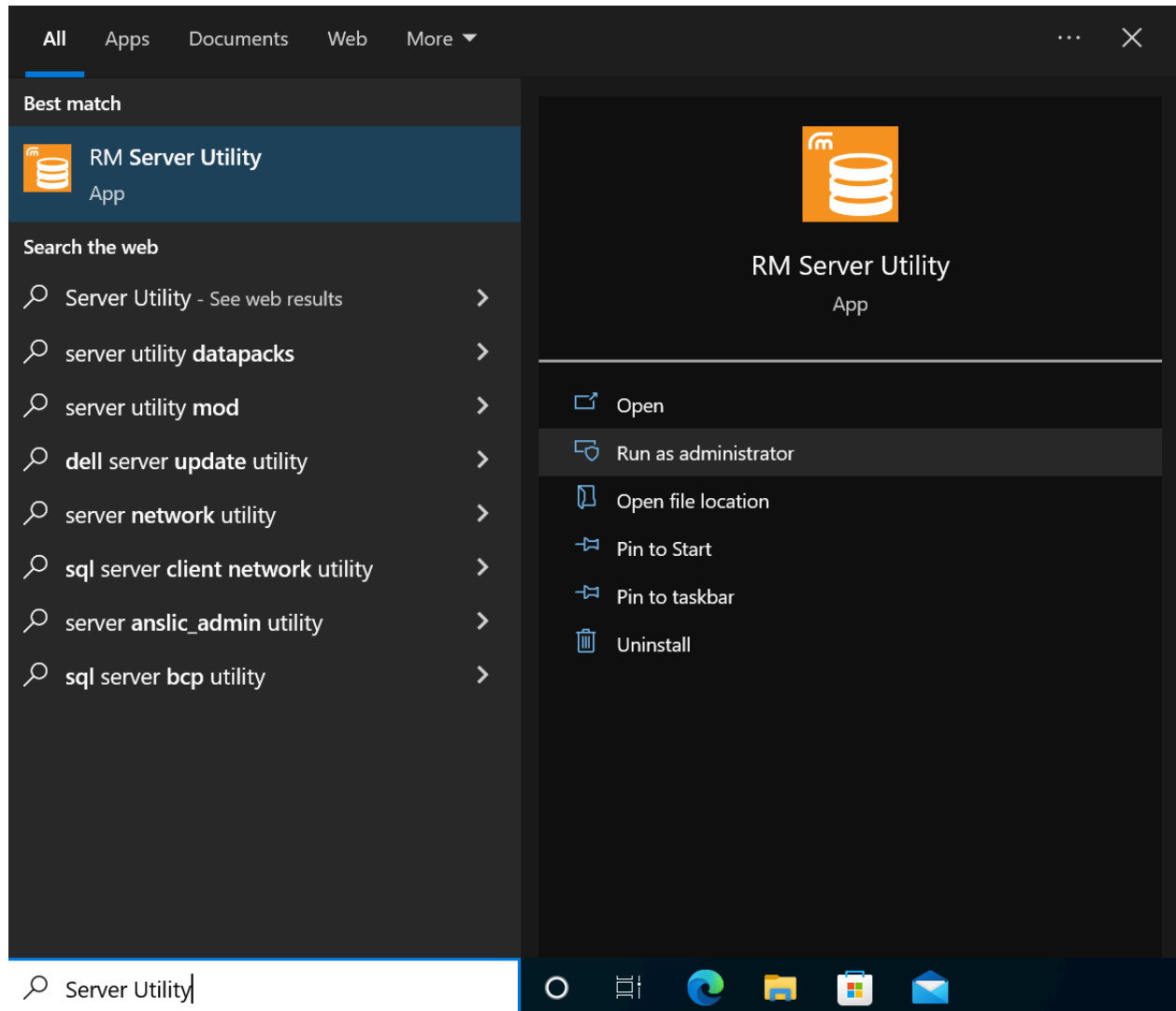
Important Notes

RM Access Control Feature Note

Important note for the customers who DO NOT need to use RM Access Control:

After upgrading an existing RM deployment to version 2.134.77.0 or later, there are some necessary steps to take to ensure normal operation, otherwise, users may not have access to the security keys and Radio View operations that they had prior to the upgrade.

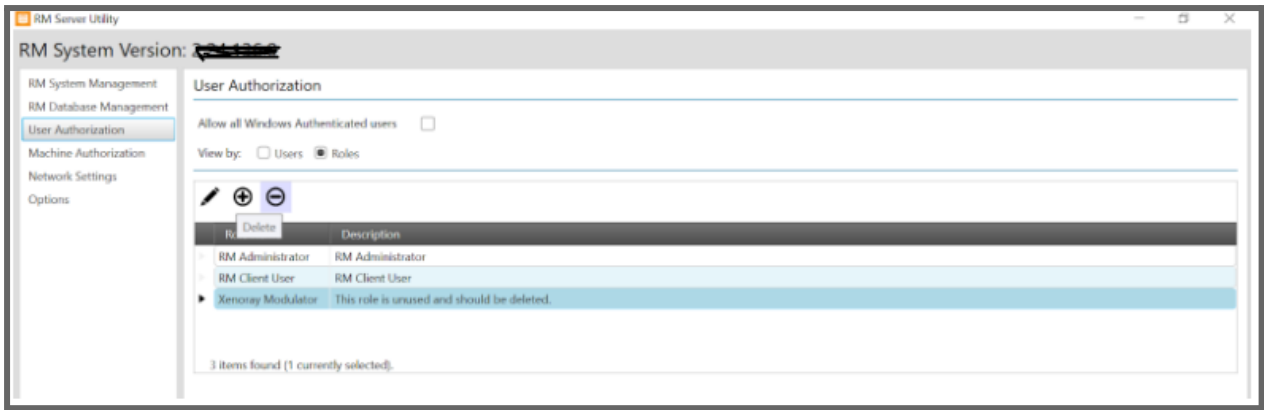
- 1) After performing the upgrade the user should open the RM Server Utility App on the machine that hosts the RM Server.



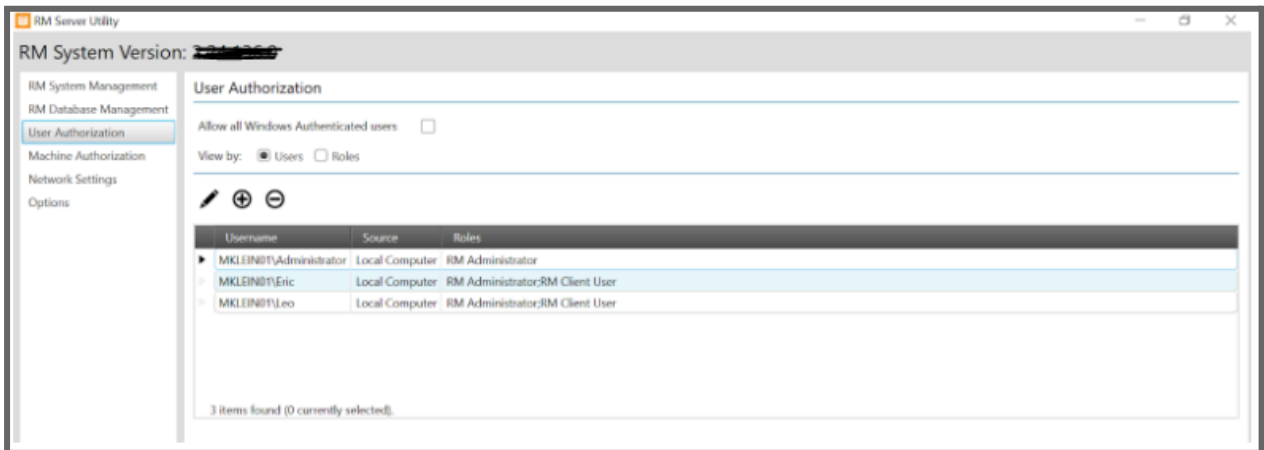
- 2) From the User Authorization tab, with the Roles radio button selected, delete any unnecessary roles that may have been created prior to the upgrade, leaving only the RM Administrator and RM Client User roles.

Motorola Solutions confidential - do not redistribute - PartnerEmpower member, customer, and prospective customer use only.

Whilst care has been taken to ensure the accuracy of the information contained in this document, Motorola Solutions retains the right to make changes at any time without notice. Availability is subject to individual country law and regulations. All specifications shown are typical unless otherwise stated and are subject to change without notice. MOTOROLA, MOTO, MOTOROLA SOLUTIONS and the Stylized M Logo are trademarks or registered trademarks of Motorola Trademark Holdings, LLC and are used under license. All other trademarks are the property of their respective owners. ©2024 Motorola Solutions, Inc. All rights reserved.



- 3) For users that do not wish to use the Access Control features at this time, select the Users radio button and ensure that each user that will be accessing RM remotely has both RM Administrator and RM Client User roles assigned to them.



- 4) This completes the necessary steps for users that do not wish to use the Access Control features. The RM Server Utility can be closed at this point. Users should be able to use the RM Configuration Client to connect to the RM Server and perform normal operations.

New Upgrade Package Zip Format

Starting from M2022.03, MSI will start to release the MOTOTRBO firmware upgrade package in zip format. Below are the instructions on how to install the firmware upgrade package.

1. Create a new folder of your choice in the C:\drive. We will use "Packages" as an example.
2. Download zip file to C:\Packages
3. Extract All

Motorola Solutions confidential - do not redistribute - PartnerEmpower member, customer, and prospective customer use only.

Whilst care has been taken to ensure the accuracy of the information contained in this document, Motorola Solutions retains the right to make changes at any time without notice. Availability is subject to individual country law and regulations. All specifications shown are typical unless otherwise stated and are subject to change without notice. MOTOROLA, MOTO, MOTOROLA SOLUTIONS and the Stylized M Logo are trademarks or registered trademarks of Motorola Trademark Holdings, LLC and are used under license. All other trademarks are the property of their respective owners. ©2024 Motorola Solutions, Inc. All rights reserved.

Name	Date modified	Type
MOTOTRBO_2.0_R0222021000_222213_Portable_NA.zip	8/30/2022 11:09 AM	Compressed (zipp...
<ul style="list-style-type: none"> Open Open in new window Extract All... Select Left Folder for Compare 		

4. Open Folder

Name	Date modified	Type	Size
MOTOTRBO_2.0_R0222021000_222213_Portable_NA.zip	8/30/2022 11:09 AM	Compressed (zipp...	58,252 KB
MOTOTRBO_2.0_R0222021000_222213_Portable_NA	10/11/2022 1:45 PM	File folder	

5. Run the Exe

program files	10/11/2022 1:45 PM	File folder	
0x0409.ini	10/1/2014 11:41 AM	Configuration sett...	22 KB
MOTOTRBO 2.0 R0222021000_222213 Portable Update Packages.msi	8/30/2022 11:09 AM	Windows Installer ...	663 KB
MOTOTRBO_2.0_R0222021000_222213_Portable_NA.exe	8/30/2022 11:09 AM	Application	1,269 KB
Setup.ini	8/30/2022 11:09 AM	Configuration sett...	6 KB

6. To save space, the folder can be deleted after successful installation

Upgrades to M2020.01 Onwards

From M2020.01 onwards only products (i.e. MOTOTRBO radios, repeaters and CMSS) which are either in warranty or covered by a service package will accept software updates. Software Update Management (SUM) was introduced with the R2.10 system release and provides products with built-in intelligence to determine if they are eligible to accept a software update. Products on prior releases must therefore be upgraded to an R2.10 system release and be eligible to accept a software update before they can be upgraded to M2020.01 onwards.

Cancelled products that are still under a service contract at time of cancellation will be entitled to the software update in line with the Motorola Solutions Software Support Policy. Following cancellation only critical bug fixes will be tested for these products. Please refer to the MOTOTRBO Post Cancellation Support Policy for further information.

When a service package is purchased, a SUM license is issued and pre-registered (in the Motorola Solutions licensing database) to the product serial number. The SUM license is then available for retrieval and activation in the product using Radio Management (RM) or the Customer Programming Software 2.0 (CPS). Once a SUM license has been activated in a product, that product is then eligible to accept software updates for the duration of the MOTOTRBO Service Package.

Note: Selected radio models shipped since 18-Nov-2019 with enhanced warranties are eligible to accept software updates for a period of up-to 5 years.

Motorola Solutions confidential - do not redistribute - PartnerEmpower member, customer, and prospective customer use only.

Whilst care has been taken to ensure the accuracy of the information contained in this document, Motorola Solutions retains the right to make changes at any time without notice. Availability is subject to individual country law and regulations. All specifications shown are typical unless otherwise stated and are subject to change without notice. MOTOROLA, MOTO, MOTOROLA SOLUTIONS and the Stylized M Logo are trademarks or registered trademarks of Motorola Trademark Holdings, LLC and are used under license. All other trademarks are the property of their respective owners. ©2024 Motorola Solutions, Inc. All rights reserved.

R2.10.10 Upgrade Packages

The R2.10.10 radio upgrade packages are only able to upgrade radios already containing R2.10 system release firmware. For radios containing pre-R2.10 system release firmware they first need to be upgraded to a previous R2.10 system release before they can be upgraded to R2.10.10. This restriction does NOT apply to the R2.10.10 repeater upgrade packages.

MOTOTRBO™ CPS 2.0

The new MOTOTRBO CPS 2.0 was introduced with MOTOTRBO system release R2.10. The MOTOTRBO CPS 2.0 provisioning and license management functionality is tested for up to three previous releases while the MOTOTRBO CPS 2.0 software update support is tested for up to five previous releases.

Use of Old Archive Codeplugs

It is generally good practice to use codeplugs generated from the default codeplug associated with the latest firmware release rather than reuse very old archived codeplugs which is not recommended.

Upgrade of Early Firmware

When an upgrade spanning multiple releases is to be performed it is strongly recommended that the upgrade be performed in multiple steps spanning no more than 3 major releases.

Upgrading Radio Systems Running Applications

To avoid unforeseen issues resulting from upgrading deployed radio systems running Applications, we recommend that you check first with your Application provider to ensure that the version of Application you are running is fully compatible with the new version of radio system.

Repeater Update Duration

When updating MOTOTRBO repeaters, it's important to ensure that the update process is not interrupted until the "Device Update Successful" message appears on the CPS screen.

Repeater Knockdown

It is recommended that the Repeater is not in the Repeater Knockdown state while performing a CPS Read or Write operation.

PN, DDMS and MNIS Applications

The Device Discovery and Mobility Service (DDMS) application replaces the legacy Presence Notifier (PN) application. Additionally, the DDMS is backwards compatible with the PN such that existing applications that interface with the PN do not require any changes to receive presence notifications from the DDMS.

Motorola Solutions confidential - do not redistribute - PartnerEmpower member, customer, and prospective customer use only.

Whilst care has been taken to ensure the accuracy of the information contained in this document, Motorola Solutions retains the right to make changes at any time without notice. Availability is subject to individual country law and regulations. All specifications shown are typical unless otherwise stated and are subject to change without notice. MOTOROLA, MOTO, MOTOROLA SOLUTIONS and the Stylized M Logo are trademarks or registered trademarks of Motorola Trademark Holdings, LLC and are used under license. All other trademarks are the property of their respective owners. ©2024 Motorola Solutions, Inc. All rights reserved.

The Device Discovery and Mobility Service (DDMS) and MOTOTRBO Network Interface Service (MNIS) applications are included on the CPS 2.0 DVD and are also available to download from MyView Portal.

The DDMS and MNIS applications are not installed automatically from the CPS 2.0 DVD, instead they need to be manually installed from the Additional_Apps folder which can be easily accessed by clicking the Additional Applications button in the CPS 2.0 DVD installer.

SMA / MX Connector Antennas

Even though the SMA antennas are non-GPS, the SMA portable models still support GPS / GNSS since all DP4x01e series portables contain internal GPS / GNSS antennas.

Only SMA antennas should be attached to SMA portable models. Attaching a standard (MX) antenna to an SMA portable will damage the SMA connector centre pin on the portable.

Conversely, only standard (MX) antennas should be attached to standard (MX) portables. Attaching an SMA antenna to a standard (MX) portable will degrade performance.

Control Head Cable Flex

The cable flex (part 30012045001) supplied with older (Numeric / Colour Display) Control Head, Remote Mount Control Head and Handheld Control Heads kits is not compatible with the new DM4000e series mobiles.

To determine if a given Numeric Display Model Control Head kit is compatible with the new DM4000e series mobile radios, refer to its part number. If the part number is PMLN5677_, then the cable flex (part 30012045001) needs to be replaced with a newer cable flex (part 30012045002) before the Numeric Display Control Head kit can be used with the DM4000e series mobile radios. If the part number is PMLN7500_, then the Numeric Display Control Head kit is already compatible with the DM4000e series mobiles.

To determine if a given Colour Display Model Control Head kit is compatible with the new DM4000e series mobile radios, refer to its part number. If the part number is PMLN5678_, then the cable flex (part 30012045001) needs to be replaced with a newer cable flex (part 30012045002) before the Colour Display Control Head kit can be used with the DM4000e series mobile radios. If the part number is PMLN7501_, then the Colour Display Control Head kit is already compatible with the DM4000e series mobiles.

To determine if a given Remote Mount Control Head kit (PMLN6404_) is compatible with the new DM4000e series mobile radios, refer to the part number on the Remote Transceiver Interface. If the part number is PMLN6402_, then the cable flex (part 30012045001) needs to be replaced with a newer cable flex (part 30012045002) before the Remote Mount Control Head kit can be used with the DM4000e series mobile radios. If the part number is PMLN7504_, then the Remote Mount Control Head kit is already compatible with the DM4000e series mobiles.

To determine if a given Handheld Control Head kit (PMLN7131_) is compatible with the new DM4000e series mobile radios, refer to the part number on the Handheld Control Head Transceiver Adapter. If the part number is PMLN7033_, then the cable flex (part 30012045001) needs to be replaced with a newer cable flex (part 30012045002) before the Handheld Control Head kit can be used with the DM4000e series mobile

Motorola Solutions confidential - do not redistribute - PartnerEmpower member, customer, and prospective customer use only.

Whilst care has been taken to ensure the accuracy of the information contained in this document, Motorola Solutions retains the right to make changes at any time without notice. Availability is subject to individual country law and regulations. All specifications shown are typical unless otherwise stated and are subject to change without notice. MOTOROLA, MOTO, MOTOROLA SOLUTIONS and the Stylized M Logo are trademarks or registered trademarks of Motorola Trademark Holdings, LLC and are used under license. All other trademarks are the property of their respective owners. ©2024 Motorola Solutions, Inc. All rights reserved.

radios. If the part number is PMLN7502_, then the Handheld Control Head kit is already compatible with the DM400e series mobiles.

RSSI Display Value

To make a MOTOTRBO subscriber display its current RSSI value, press the left arrow three times and immediately press the right arrow three times, all within 5 seconds of power up.

R2.X MPT1327 GOB Upgrade Kit

The R2.X MPT1327 GOB Upgrade Kit supports Windows 7.

When installing and launching the R2.X MPT1327 GOB Upgrade Kit on a Windows 7 computer, select “Run as administrator”.

The R1.X and R2.X MPT1327 GOB Upgrade Kits cannot be installed together on the same computer. So if the R1.X MPT1327 GOB Upgrade Kit is already installed then this will have to be un-installed before the R2.X MPT1327 GOB Upgrade Kit can be installed.

The R2.X MPT1327 GOB Upgrade Kit does NOT preserve the R2.X MPT1327 GOB configuration, so before upgrading the R2.X MPT1327 GOB firmware read the R2.X MPT1327 GOB configuration using the MPT1327 GOB CPS and save it to a *.rad file. After upgrading the R2.X MPT1327 GOB firmware, the saved *.rad file can be written back to the R2.X MPT1327 GOB using the MPT1327 GOB CPS.

MPT1327 GOB CPS

The MPT1327 GOB CPS supports Windows 7.

When installing and launching the MPT1327 GOB CPS on a Windows 7 computer, select “Run as administrator”.

MPT1327 / Connect Plus Options

Certain radio models can be ordered with factory fitted MPT1327 / Connect Plus option boards.

(NOTE: the generic option board can NOT be field upgraded to support MPT1327)

MPT1327 / Connect Plus GOB Firmware Compatibility

Where a radio contains an MPT1327 / Connect Plus option board it's important to adhere to the following simple rules in order to ensure full compatibility between the option board firmware and the radio firmware:

1. On installing an MPT1327 / Connect Plus option board, ensure that both the option board and the radio contain the latest available firmware versions.
2. On upgrading a radio to the latest available firmware version, ensure that the option board also contains the latest available firmware version.

Motorola Solutions confidential - do not redistribute - PartnerEmpower member, customer, and prospective customer use only.

Whilst care has been taken to ensure the accuracy of the information contained in this document, Motorola Solutions retains the right to make changes at any time without notice. Availability is subject to individual country law and regulations. All specifications shown are typical unless otherwise stated and are subject to change without notice. MOTOROLA, MOTO, MOTOROLA SOLUTIONS and the Stylized M Logo are trademarks or registered trademarks of Motorola Trademark Holdings, LLC and are used under license. All other trademarks are the property of their respective owners. ©2024 Motorola Solutions, Inc. All rights reserved.

3. On upgrading an option board to the latest available firmware version, ensure that the radio also contains the latest available firmware version.

Options boards for DP4000/DM4000 series radios are NOT forward compatible with DP3000e/DP4000e/DM4000e series radios and option boards for DP3000e/DP4000e/DM4000e series radios not backwards compatible with DP4000/DM4000 series radios.

Motorola Solutions confidential - do not redistribute - PartnerEmpower member, customer, and prospective customer use only.

Whilst care has been taken to ensure the accuracy of the information contained in this document, Motorola Solutions retains the right to make changes at any time without notice. Availability is subject to individual country law and regulations. All specifications shown are typical unless otherwise stated and are subject to change without notice. MOTOROLA, MOTO, MOTOROLA SOLUTIONS and the Stylized M Logo are trademarks or registered trademarks of Motorola Trademark Holdings, LLC and are used under license. All other trademarks are the property of their respective owners. ©2024 Motorola Solutions, Inc. All rights reserved.

Open (Unresolved) Issues

Open (Unresolved) issues are all known or reported issues that still exist in this current software release and may occur under certain circumstances.

Infrastructure Impact

No known issues

CPS-RM / RDAC Impact

No known issues

Radio Impact

Issue Number: DEVICES_COMMON-7997
System/Product: MOTOTRBO R7 series
Description: If a user is using a Wi-Fi hotspot to perform the One Time Activation and the hotspot device is turned off during the process, the radio may continue to display a Wi-Fi icon with 1 bar coverage and subsequently "Update Not Available" on the screen.
Workarounds: The hotspot device must be turned on and the radio has to be rebooted.

Issue Number: DEVPCRMAC-186
System/Product: MOTOTRBO Ion
Description: When the radio is being charged, the top display battery level indicator should be referred to instead of the front display for better accuracy of the charge level
Workarounds: N/A

Issue Number: PCR_SUB-33284
System/Product: MOTOTRBO Ion
Description: When LMR has privacy configured, over the air LMR RF transmission of calls is not encrypted when the user is talking on the broadband network.
Workarounds: N/A

Issue Number: PCR_SUB-33770/PCR_SUB-34610
System/Product: MOTOTRBO Ion
Description: When a radio user in the broadband mode tries to initiate a private call or an Instant Personal Alert (IPA) via contact list to a target radio that is offline, the presence status of the target radio will still appear as online on the radio contact list.
Workarounds: N/A

Issue Number: PCR_SUB-34462
System/Product: MOTOTRBO Ion
Description: If an interop group call is initiated from an Ion radio in LMR and there is no Ion radio participant in the Broadband mode, the Ion radio that

Motorola Solutions confidential - do not redistribute - PartnerEmpower member, customer, and prospective customer use only.

Whilst care has been taken to ensure the accuracy of the information contained in this document, Motorola Solutions retains the right to make changes at any time without notice. Availability is subject to individual country law and regulations. All specifications shown are typical unless otherwise stated and are subject to change without notice. MOTOROLA, MOTO, MOTOROLA SOLUTIONS and the Stylized M Logo are trademarks or registered trademarks of Motorola Trademark Holdings, LLC and are used under license. All other trademarks are the property of their respective owners. ©2024 Motorola Solutions, Inc. All rights reserved.

	moves from LMR to Broadband mode will not be able to join the ongoing interop group call as late entry
Workarounds:	N/A
Issue Number:	PCR_SUB-34686
System/Product:	MOTOTRBO Ion
Description:	In an emergency interop scenario, the emergency alarm initiated from the radio in a converged broadband or broadband channel can only be canceled by the emergency originator itself or a WAVE PTX authorized user (e.g. WAVE PTX dispatcher assigned as authorized user). Emergency cancel triggered by TRBOnet PLUS console will not be able to cancel the emergency.
Workarounds:	N/A
Issue Number:	PCR_SUB-34871/PCR_SUB-34237
System/Product:	MOTOTRBO Ion
Description:	When a radio is powered off in Broadband mode (either in WAVE PTX channel or converged broadband channel), the presence status of the radio will still appear as online on TRBOnet PLUS console. If a private call is initiated to the power off unit, the private call will be successful
Workarounds:	N/A
Issue Number:	PCR_SUB-35488
System/Product:	MOTOTRBO Ion
Description:	When a radio in broadband mode is in an emergency state and the user performs a mode change from the broadband channel to a LMR channel (either a LMR channel or a converged LMR channel), it will receive an emergency alarm from its own radio
Workarounds:	Dismiss the emergency alarm from notification screen
Issue Number:	MAUIAP-32385
System/Product:	MOTOTRBO Ion
Description:	When the radio is using WPA3 hotspot setting, MOTOTRBO R7 is unable to connect to hotspot
Workarounds:	Enabling WPA2 in the Hotspot security setting in the radio will support hotspot connection to MOTOTRBO R7
Issue Number:	MAUIAP-41662
System/Product:	MOTOTRBO Ion
Description:	Audio on Bluetooth accessories will be muted when the video recording is turned on
Workarounds:	Turn off Bluetooth on the device if video recording is initiated to route the incoming audio to the device internal speaker
Issue Number:	MV_EDL_SW-4405
System/Product:	MOTOTRBO Ion
Description:	VB400 intermittently re-connects to the radio when Bluetooth is switch off and then turned on again from the device settings when Bluetooth Tethering is enabled
Workarounds:	Power cycle the radio or place the VB400 back to the docking station

Motorola Solutions confidential - do not redistribute - PartnerEmpower member, customer, and prospective customer use only.

Whilst care has been taken to ensure the accuracy of the information contained in this document, Motorola Solutions retains the right to make changes at any time without notice. Availability is subject to individual country law and regulations. All specifications shown are typical unless otherwise stated and are subject to change without notice. MOTOROLA, MOTO, MOTOROLA SOLUTIONS and the Stylized M Logo are trademarks or registered trademarks of Motorola Trademark Holdings, LLC and are used under license. All other trademarks are the property of their respective owners. ©2024 Motorola Solutions, Inc. All rights reserved.

Issue Number: ACCY-5284
System/Product: MOTOTRBO Ion
Description: Radio may not reconnect back to WM500 or EP910 when the Bluetooth accessories goes out of range and then back in range
Workarounds: Power cycle the Bluetooth accessories and the radio to reconnect back to WM500 or EP910

Resolved Issues in M2024.xx System Releases

Resolved issues are the known product problems that were reported in products releases, but have now been fixed or closed.

Resolved in M2024.xx:

Infrastructure Impact

Issue Number: RFC_PCR-273 Capacity Max may stop transmitting GPS data randomly (Resolved in M2024.02)

System/Products: Data Revert Repeater in Capacity Max System
Description: Subscribers may randomly stop reporting GPS locations on Capacity Max.

Issue Number: INC0000817853/MTN_PCR-68 Capacity Max Atia logs report wrong RSSI on session_end (Resolved in M2024.02)

System/Products: SLR 1000, SLR 5500 and SLR 8000 repeaters
Description: Atia log "session_end" reports incorrect RSSI - call's RSSI instead of the noise floor RSSI

Issue Number: RFC_PCR-243 Repeater doesn't check color code for USB D poling (LIP) data transmission (Resolved in M2024.02)

System/Products: Capacity Max and SLR 1000, SLR 5500 and SLR 8000 repeaters
Description: Repeaters don't discard USB D data transmitted by radios with unmatching color code

Issue Number: UEM-7280/MTN_PCR-63 (Resolved in M2024.01.01)

System/Products: Capacity Max/System Advisor
Description: After upgrading Java to 8u411 (released on 16 April) on Windows, System View and Grid View in SA client are not working. Blank page is displayed instead of System View

Workaround: For issue avoidance if any of previous releases of Java is installed, then do not install the latest one (8u411). If Java 8u411 is installed for recovery uninstall it using Control Panel. For further details please refer to [MTN-0063-24 Capacity Max System Advisor System View and Grid View are not opening on Java 1.8.411](#)

Issue Number: UEM-7269 (Resolved in M2024.01.01)

System/Products: Capacity Max/System Advisor
Description: System Advisor java app is not starting properly with some errors visible in console

Motorola Solutions confidential - do not redistribute - PartnerEmpower member, customer, and prospective customer use only.

Whilst care has been taken to ensure the accuracy of the information contained in this document, Motorola Solutions retains the right to make changes at any time without notice. Availability is subject to individual country law and regulations. All specifications shown are typical unless otherwise stated and are subject to change without notice. MOTOROLA, MOTO, MOTOROLA SOLUTIONS and the Stylized M Logo are trademarks or registered trademarks of Motorola Trademark Holdings, LLC and are used under license. All other trademarks are the property of their respective owners. ©2024 Motorola Solutions, Inc. All rights reserved.

log

Workaround: Try starting SA again

Issue Number: ENG_INFRA_PCR-16111 (Resolved in M2024.01)

System/Products: TRBOnet PLUS and Linked Capacity Plus (LCP)

Description: When 2 or more Capacity Plus multi-site systems are set up to use a single MNIS gateway with a dispatch console, only one system will be able to work correctly, while the other systems will fail to communicate with the dispatch console.

Issue Number: UEM-6670 (Resolved in M2024.01)

System/Products: CMSS/UEM

Description: During the upgrade to M2022.03 or M2023.01, the ATIA logs are not automatically saved and they will be lost, so users will not be able to access historical calls information

Issue Number: ENG_INFRA_PCR-16303 (Resolved in M2024.01)

System/Products: CMSS

Description: CMSS defective hardware (incl. SD card) causes upgrade from 2022.03 to 2023.01 to fail

Issue Number: ENG_INFRA_PCR-16386 (Resolved in M2024.01)

System/Products: CMB - Capacity Max Bridge

Description: After the upgrade from M2022.01 to M2023.01, CMB license is not preserved, which can be seen in System Advisor, CMB webpage. Without a license, CMB will not operate.

Issue Number: UEM-6738 (Resolved in M2024.01)

System/Products: CMSS/System Advisor

Description: Grid View and Raw View may display incorrect information about ongoing calls in the system. This issue is related to the number of simultaneous calls in the system. When there are many calls started and ended in a short period of time, System Advisor is not able to process all of them and starts to display incorrect information on Grid View and Raw View.

Issue Number: PBI00000044200 (Resolved in M2024.01)

System/Products: TRBOnet PLUS/MNIS Gateway

Description: User presses the PTT icon and they get a message saying "equipment not available". All the registered talkpath between TRBOnet PLUS and the MNIS Gateway become unregistered, then a short time later the problem resolves itself and the talk paths are re-register. Rebooting the MNIS Gateway also resolved the issue. Issue was affecting versions M2022.03 and M2023.01.

Issue Number: INC000008066797/MTN-0122-23 (Resolved in M2024.01)

System/Products: CMSS

Description: When trying to schedule a Write Job using Radio Management software, users may very rarely get an "Error 1562".

Issue Number: INC000007702571 (Resolved in M2024.01)

Motorola Solutions confidential - do not redistribute - PartnerEmpower member, customer, and prospective customer use only.

Whilst care has been taken to ensure the accuracy of the information contained in this document, Motorola Solutions retains the right to make changes at any time without notice. Availability is subject to individual country law and regulations. All specifications shown are typical unless otherwise stated and are subject to change without notice. MOTOROLA, MOTO, MOTOROLA SOLUTIONS and the Stylized M Logo are trademarks or registered trademarks of Motorola Trademark Holdings, LLC and are used under license. All other trademarks are the property of their respective owners. ©2024 Motorola Solutions, Inc. All rights reserved.

System/Products: MNIS Gateway
Description: MNIS Gateway does not forward packets from repeaters into the tunnel

Issue Number: MTN-0153-23 (Resolved in M2024.01)
System/Products: CMSS
Description: MNIS Gateway backup fails to restore when upgrading a CMSS to firmware M2022.03 using M2023.01 ESU Launchpad

Issue Number: MTN-0163-23 (Resolved in M2024.01)
System/Products: SLR 1000, SLR 5500, SLR 8000 repeaters
Description: Unable to open repeater webpage with latest versions of Chromium-based browsers including Google Chrome and Microsoft Edge

CPS-RM / RDAC Impact

Issue Number: RFC_PCR-275/PRB0000046667 (Resolved in M2024.02)
System/Product: MOTOTRBO R7/R7a series
Description: When Radio Management Job Processor/CPS 2.0 language is set to non-English, and the user reads a MOTOTRBO R7/R7a radio and tries to write/clone the configuration, the job will fail with the error #101003.

Issue Number: RFC_PCR-271/PRB0000046634 (Resolved in M2024.02)
System/Product: DP540, DP1400, MOTOTRBO R2, DP2000e series, DP3000e series, DP4000e series, MOTOTRBO R7/R7a, DP4000Ex series, DP4000ExMa series, SL1600, SL2600, DM1000 series, DM2600, DM4000e radios
Description: The issue occurs if during the radio configuration, the user tries to get to the set by FIRST clicking on the settings icon (cogwheel) next to the set name, without opening any other set category (by clicking on the set name). If the user opens any set category first, by clicking the set name, the issue doesn't occur. After reading > editing > writing the codeplug the customer is getting the MVO error and application crashes.

Issue Number: RFC_PCR-253/PRB0000045419 (Resolved in M2024.02)
System/Product: Capacity Max System
Description: RadioManagement allows you to set the Capacity Max network ID for Huge networks up to 5 where the maximum value for Huge networks should be 3.

Issue Number: RFC_PCR-251/PRB0000045259 (Resolved in M2024.02)
System/Product: MOTOTRBO R2 radios
Description: Writing the selected MVO to a new MOTOTRBO R2 radio does not work. Error code 680 "Failed to write to the device. Device could be modified outside of the database. Please schedule the read job" occurs.

Issue Number: RFC_PCR-255/PRB0000045056 (Resolved in M2024.02)
System/Product: Repeater SLR8000
Description: When applying a Digital Audio license to a repeater with firmware version

Motorola Solutions confidential - do not redistribute - PartnerEmpower member, customer, and prospective customer use only.

Whilst care has been taken to ensure the accuracy of the information contained in this document, Motorola Solutions retains the right to make changes at any time without notice. Availability is subject to individual country law and regulations. All specifications shown are typical unless otherwise stated and are subject to change without notice. MOTOROLA, MOTO, MOTOROLA SOLUTIONS and the Stylized M Logo are trademarks or registered trademarks of Motorola Trademark Holdings, LLC and are used under license. All other trademarks are the property of their respective owners. ©2024 Motorola Solutions, Inc. All rights reserved.

R20.23.02.06 or newer, CPS shows the "Unable to program the radio dialog. Please update the radio firmware" error despite the firmware having been updated or reloaded. Only applying the Digital Phone Patch license resolves the issue.

Issue Number: RFC_PCR-247/PRB0000045076 (Resolved in M2024.02)
System/Product: Affected repeater models: SLR 1000, SLR 5500, SLR 8000
Description: Repeater resets continuously. This happens when both Dynamic Mixed Mode and Voting Repeater is enabled at the same time. Such configuration is not supported and it should not be allowed to be written to the repeater.

Issue Number: RFC_PCR-245/PRB0000044389 (Resolved in M2024.02)
System/Product: DP540, DP1400, DM1400, DM1600, SL1600
Description: When trying to program a Digital All call in the configuration view Radio Management displays error code 700100300 "Value is out of range". After clicking on the error there is information shown about the range for the field: 1677215 - 16776415. This happens in the configuration view only. If the changes are made from Radio View, then edit configuration the validation results doesn't occur.

Issue Number: RFC_PCR-238/INC0000161483 (Resolved in M2024.01)
System/Product: CPS 2.0, Radio Management/DP4000e series radios
Description: Multi Button PTT option is not available in the RM/CPS for DP4600e / DP4601e radios.

Device Impact

Issue Number: PCR_SUB-47961 (INC0001317743) (Resolved in M2024.02.01)
System/Products: MOTOTRBO R7
Description: MOTOTRBO R7 Audio accessory issue after one time activation process to M2024.02 version R02.24.02.1002 on radios shipped with M2024.01 and earlier firmware.
For further details please refer to [MTN-0153-24](#)

Issue Number: PCR_SUB-44406 (Resolved in M2024.02)
System/Products: MOTOTRBO R7
Description: CFS license write failure observed when a user attempted to register a second CFS license after the first by using a different write method (WIFI Otap or USB).

Issue Number: PCR_SUB-44459 /PCR_SUB-46360(INC0000271495) (Resolved in M2024.02)
System/Product: DP4000e series and MOTOTRBO R7 series - radios listed in Addendum at pages 35-36.
Description: If the user turns off the radio with GNSS enabled within the first 20 seconds of the power up sequence, there will be a noticeable delay in the next power up.
For further details please refer to [MTN-0078-24](#)

Issue Number: PCR_SUB-46130/INC0000434439 (Resolved in M2024.02)
System/Product: DP540, DP1400, MOTOTRBO R2, DP2000e series, DP3000e series, DP4000e series,

Motorola Solutions confidential - do not redistribute - PartnerEmpower member, customer, and prospective customer use only.

Whilst care has been taken to ensure the accuracy of the information contained in this document, Motorola Solutions retains the right to make changes at any time without notice. Availability is subject to individual country law and regulations. All specifications shown are typical unless otherwise stated and are subject to change without notice. MOTOROLA, MOTO, MOTOROLA SOLUTIONS and the Stylized M Logo are trademarks or registered trademarks of Motorola Trademark Holdings, LLC and are used under license. All other trademarks are the property of their respective owners. ©2024 Motorola Solutions, Inc. All rights reserved.

MOTOTRBO R7/R7a, DP4000Ex series, DP4000ExMa series, SL1600, SL2600, SL4000e series, MOTOTRBO Ion smart radio, DM1000 series, DM2600 and DM4000e

Description: During 5-Tone transmission, when the PTT has been released by accident and the DTMF tone is still transmitting, the radio will get stuck at the transmitting state, which makes the system busy. The issue happens provided that the radio has at least one telegram or 5-Tone programmed in the radio.

Issue Number: N/A (Resolved in M2024.01.01)

System/Product: MOTOTRBO R2 and DP540

Description: If subjected to radio upgrade or recovery with firmware version R02.24.01.3002 (MOTOTRBO R2) and recovery with version R01.24.01.3000 (DP540), the radios listed below will exhibit minor transmitting frequency drift that may impede two way communications.
 PMUE5847BAAEAA MOTOTRBO R2 400-480 4W NKP
 PMUE5847BAAEEA MOTOTRBO R2 400-480 4W NKP ANALOG
 PMUD3524BAAEAA MOTOTRBO R2 136-174M 5W NKP
 PMUD3524BAAEEA MOTOTRBO R2 136-174M 5W NKP ANALOG
 PMUE4526CAAEEA DP540 403-480M 4W NKP

Issue Number: PCR_SUB-46286 /INC0000304706 (Resolved in M2024.01.01)

System/Product: MOTOTRBO R2

Description: Under very rare circumstances after turning the radio off, it may not be possible to turn the radio back on.
 For further details please refer to [MTN-0071-24](#)

Issue Number: PCR_SUB-43735/INC000008188234 (Resolved in M2024.01)

System/Product: DP3661e, DP4600e / DP4601e / DP4800e / DP 4801e, DP4801Ex, SL4000e series and DM4600e / DM4601e

Description: Upgrading from Firmware R02.22.03.1001 (M2022.03) or earlier to R02.23.01.3001 (M2023.01) will impair Text to Speech feature in Connect Plus mode.

Issue Number: PCR_SUB-44482/INC0000161478 (Resolved in M2024.01)

System/Product: MOTOTRBO R7 capable radios

Description: Fall alert (formerly known as Man Down) license missing after performing radio recovery.

Issue Number: PCR_SUB-44943/INC0000196268 (Resolved in M2024.01)

System/Product: DP3000e series, DP4000e series, MOTOTRBO R7/R7a series, DP4000Ex series, SL4000e series, DM4000e series

Description: Radio with Unified Single Block Data (USBD) Polling Service that is using Location Information Protocol (LIP) introduced in M2023.01 does not work in 3rd party DMR Tier III network using color code other than 0.

Motorola Solutions confidential - do not redistribute - PartnerEmpower member, customer, and prospective customer use only.

Whilst care has been taken to ensure the accuracy of the information contained in this document, Motorola Solutions retains the right to make changes at any time without notice. Availability is subject to individual country law and regulations. All specifications shown are typical unless otherwise stated and are subject to change without notice. MOTOROLA, MOTO, MOTOROLA SOLUTIONS and the Stylized M Logo are trademarks or registered trademarks of Motorola Trademark Holdings, LLC and are used under license. All other trademarks are the property of their respective owners. ©2024 Motorola Solutions, Inc. All rights reserved.

Addendum

List of GNSS receiver radios affected by the resolved issue PCR_SUB-46360/INC0000271495 (see further details at page 34)

Product Name	Tanapa	Description
MOTOTRBO R7 series	PMUE5722CAB	MOTOTRBO R7 UHF 4W FKP (ENG) GNSS BT WLAN UL
	PMUE5723CAA	MOTOTRBO R7 UHF 4W NKP GNSS BT WLAN UL
	PMUE5724CAB	MOTOTRBO R7 UHF 4W FKP (ENG) GNSS BT WLAN
	PMUE5724CAF	MOTOTRBO R7 UHF 4W FKP (ARABIC) GNSS BT WLAN
	PMUE5724CAG	MOTOTRBO R7 UHF 4W FKP (CYRILLIC) GNSS BT WLAN
	PMUD3491CAB	MOTOTRBO R7 VHF 5W FKP (ENG) GNSS BT WLAN UL
	PMUD3492CAA	MOTOTRBO R7 VHF 5W NKP GNSS BT WLAN UL
	PMUD3493CAB	MOTOTRBO R7 VHF 5W FKP (ENG) GNSS BT WLAN
	PMUD3493CAF	MOTOTRBO R7 VHF 5W FKP (ARABIC) GNSS BT WLAN
	PMUD3493CAG	MOTOTRBO R7 VHF 5W FKP (CYRILLIC) GNSS BT WLAN
	PMUD3530AAA	MOTOTRBO R7 350-400M 4W NKP CFS GNSS BT WLAN
	PMUD3531AAB	MOTOTRBO R7 350-400M 4W FKP BT WIFI GNSS
	DP4000e series	PMUE5770BACEAA
PMUE5770BBCEAA		DP4801E 403-527 4W FKP GOB GNSS BT WIFI TIA4950
PMUE5772BBQEAA		DP4601E 403-527 4W LKP GNSS BT WIFI GOB TIA4950
PMUE5774BAAEAA		DP4401E 403-527 4W NKP GNSS BT WIFI TIA4950
PMUE5774BBAAEAA		DP4401E 403-527 4W NKP GOB GNSS BT WIFI TIA4950
PMUE3675FACEAA		DP4801E 403-527 4W FKP GNSS BT WIFI
PMUE3675FBCEAA		DP4801E 403-527 4W FKP GOB GNSS BT WIFI
PMUE3681FAAEAA		DP4401E 403-527 4W NKP GNSS BT WIFI
PMUE3681FBAAEAA		DP4401E 403-527 4W NKP GOB GNSS BT WIFI
PMUE3678FAQEAA		DP4601E 403-527 4W LKP GNSS BT WIFI
PMUE3678FBQEAA		DP4601E 403-527 4W LKP GNSS BT WIFI GOB
PMUD3496BACEAA		DP4801E 136-174 5W FKP GNSS BT WIFI TIA4950
PMUD3496BAGEAA		DP4801E 136-174 5W CYR FKP GNSS BT WIFI TIA4950
PMUD3496BAHEAA		DP4801E 136-174 5W ARB FKP GNSS BT WIFI TIA4950

Motorola Solutions confidential - do not redistribute - PartnerEmpower member, customer, and prospective customer use only.

Whilst care has been taken to ensure the accuracy of the information contained in this document, Motorola Solutions retains the right to make changes at any time without notice. Availability is subject to individual country law and regulations. All specifications shown are typical unless otherwise stated and are subject to change without notice. MOTOROLA, MOTO, MOTOROLA SOLUTIONS and the Stylized M Logo are trademarks or registered trademarks of Motorola Trademark Holdings, LLC and are used under license. All other trademarks are the property of their respective owners. ©2024 Motorola Solutions, Inc. All rights reserved.

PMUD3496BBCEAA	DP4801E 136-174 5W FKP GOB GNSS BT WIFI TIA4950
PMUD3500BBQEAA	DP4601E 136-174 5W LKP GNSS BT WIFI GOB TIA4950
PMUD3498BBAEAA	DP4401E 136-174 5W NKP GOB GNSS BT WIFI TIA4950
PMUD2904EACEAA	DP4801E 136-174 5W FKP GNSS BT WIFI
PMUD2904EAHEAA	DP4801E 136-174 5W ARB FKP GNSS BT WIFI
PMUD2904EBCEAA	DP4801E 136-174 5W FKP GOB GNSS BT WIFI
PMUD2906EAAEAA	DP4401E 136-174 5W NKP GNSS BT WIFI
PMUD2906EBAEAA	DP4401E 136-174 5W NKP GOB GNSS BT WIFI
PMUD2918EAQEAA	DP4601E 136-174 5W LKP GNSS BT WIFI
PMUD2918EBQEAA	DP4601E 136-174 5W LKP GNSS BT WIFI GOB

Motorola Solutions confidential - do not redistribute - PartnerEmpower member, customer, and prospective customer use only.

Whilst care has been taken to ensure the accuracy of the information contained in this document, Motorola Solutions retains the right to make changes at any time without notice. Availability is subject to individual country law and regulations. All specifications shown are typical unless otherwise stated and are subject to change without notice. MOTOROLA, MOTO, MOTOROLA SOLUTIONS and the Stylized M Logo are trademarks or registered trademarks of Motorola Trademark Holdings, LLC and are used under license. All other trademarks are the property of their respective owners. ©2024 Motorola Solutions, Inc. All rights reserved.

Open Source Software Legal Notice

This media, software or hardware ("Product") obtained from Motorola Solutions, Inc. ("Motorola Solutions") may include Motorola Solutions' Software, Third Party Software (defined below), and/or Open Source Software (defined below).

The object code or source code (collectively, the "Software") included with the Product is the exclusive property of Motorola Solutions or its licensors, and any use is subject to the terms and conditions of one or more agreements in force between the purchaser of the Motorola Solutions Product or licensee of the Motorola Solutions Software and Motorola Solutions. SOFTWARE IS PROTECTED BY U.S. COPYRIGHT LAWS AND INTERNATIONAL LAWS AND TREATIES. UNAUTHORIZED COPYING, DISTRIBUTION OR OTHER USE OF THIS PRODUCT IS STRICTLY PROHIBITED. ANY DISTRIBUTION OR USE NOT SPECIFICALLY APPROVED BY MOTOROLA SOLUTIONS IS STRICTLY PROHIBITED.

Motorola Solutions' Software is subject to the commercial terms and conditions entered into with Motorola Solutions, any other use is strictly prohibited. Commercial Software licensed for redistribution by Motorola Solutions ("Third Party Software") is subject to the terms and conditions in force between Motorola Solutions and the licensor of the Third party Software. The terms and conditions governing the usage of Third Party Software may be part of the agreement entered into by the purchaser of the Product with Motorola Solutions or separate Third Party Software license agreement(s) included with the Product.

Software provided by Motorola Solutions which is covered by a publicly available license governed solely under Copyright law, whereas the complete terms and obligations of such license attach to a licensee solely through the act of copying, using and/or distribution of the licensed Software, such obligations often include one or more of attribution obligations, source code distribution obligations, copyleft obligations, and intellectual property encumbrances is referred to herein as "Open Source Software". The use of any Open Source Software is subject to the licenses, terms and conditions of the commercial agreement in force between the purchaser of the Product and Motorola Solutions as well as the terms and conditions of the corresponding license of each Open Source Software package. If there is a conflict between the terms and conditions of any commercial agreement and the terms and conditions of the Open Source Software license, the applicable Open Source Software license will take precedence. Copies of the licenses for the included Open Source Software as well as their attributions, acknowledgements, and software information details, are listed below. Motorola Solutions is required to reproduce the software licenses, acknowledgements and copyright notices as provided by the authors and owners, thus, all such information is provided in its native language form, without modification or translation.

Use of any Software is subject to acceptance of the corresponding terms associated with the Software and by using the Software you agree you have reviewed the terms and agreed to be bound by said terms.

To obtain a copy of the source code for the Open Source Software with source code distribution obligations, you may send a formal request in writing to:

Motorola Solutions, Inc.
Open Source Software Management
2000 Progress Parkway
Schaumburg, IL 60196 USA.

In your request, please include the Motorola Solutions Product name and version, along with the Open Source Software specifics, such as the Open Source Software name and version.

The source code for the Open Source Software included by Motorola Solutions may be residing on the

Motorola Solutions confidential - do not redistribute - PartnerEmpower member, customer, and prospective customer use only.

Whilst care has been taken to ensure the accuracy of the information contained in this document, Motorola Solutions retains the right to make changes at any time without notice. Availability is subject to individual country law and regulations. All specifications shown are typical unless otherwise stated and are subject to change without notice. MOTOROLA, MOTO, MOTOROLA SOLUTIONS and the Stylized M Logo are trademarks or registered trademarks of Motorola Trademark Holdings, LLC and are used under license. All other trademarks are the property of their respective owners. ©2024 Motorola Solutions, Inc. All rights reserved.

Product's installation media provided with the Product or on supplemental Product media. Please reference and review the entire Motorola Solutions Open Source Software "Legal Notices" and any corresponding "End User License Agreement" provided with the Product or the commercial agreement under which the Product was purchased for details on the availability, location and method for obtaining source code. Further, depending on the license terms of the specific Open Source Software, source code may not be provided. Please reference and review the entire Motorola Solutions Open Source Software "Legal Notices" and "End User License Agreement" to identify which Open Source Software packages have source code provided or available.

MOTOROLA, MOTOROLA SOLUTIONS and the Stylized M Logo are trademarks or registered trademarks of Motorola Trademark Holdings, LLC and are used under license. All other trademarks are the property of Motorola Solutions, Inc. or their respective owners. All rights reserved.

Motorola Solutions confidential - do not redistribute - PartnerEmpower member, customer, and prospective customer use only.

Whilst care has been taken to ensure the accuracy of the information contained in this document, Motorola Solutions retains the right to make changes at any time without notice. Availability is subject to individual country law and regulations. All specifications shown are typical unless otherwise stated and are subject to change without notice. MOTOROLA, MOTO, MOTOROLA SOLUTIONS and the Stylized M Logo are trademarks or registered trademarks of Motorola Trademark Holdings, LLC and are used under license. All other trademarks are the property of their respective owners. ©2024 Motorola Solutions, Inc. All rights reserved.